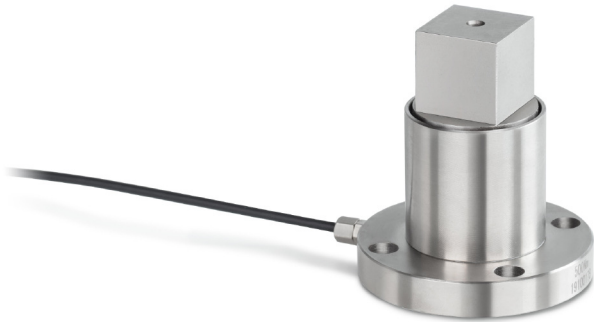


KERN DC10-Y1

Static torque sensor made from alloy steel

KERN[®]



Measuring system

Combined Error:	0,500 %
Load cell connection:	4-wire
Measuring capacity [Max]:	10 Nm
Nominal sensitivity:	1,200

Environmental conditions

Maximum operating temperature:	65 °C
Minimum operating temperature:	-20 °C

Category

Brand:	Sauter
--------	--------

Packaging & shipping

Delivery:	24 h
Dimensions packaging (WxDxH):	120 x 90 x 85 mm
Gross weight:	421 g
Net weight:	380 g
Shipping method:	Parcel service

Construction

Cable length:	2 m
---------------	-----

Piktogramme

STANDARD



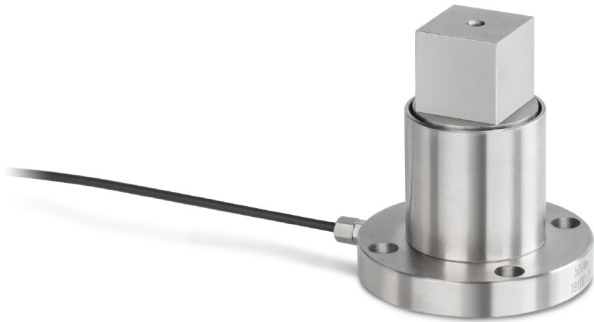
OPTION



KERN DC 100-Y1

Static torque sensor made from alloy steel

KERN[®]



Measuring system

Combined Error:	0,500 %
Load cell connection:	4-wire
Measuring capacity [Max]:	100 Nm
Nominal sensitivity:	1,900

Environmental conditions

Maximum operating temperature:	65 °C
Minimum operating temperature:	-20 °C

Category

Brand:	Sauter
--------	--------

Packaging & shipping

Delivery:	24 h
Dimensions packaging (WxDxH):	120 x 90 x 85 mm
Gross weight:	421 g
Net weight:	380 g
Shipping method:	Parcel service

Construction

Cable length:	2 m
---------------	-----

Piktogramme

STANDARD



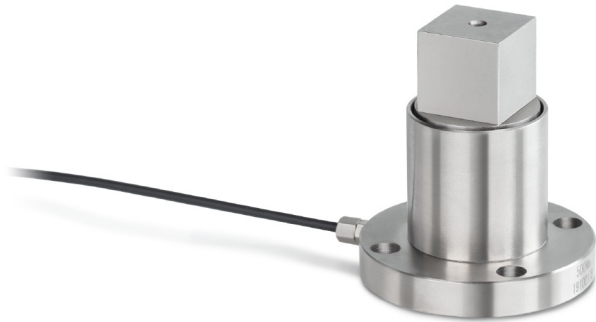
OPTION



KERN DC20-Y1

Static torque sensor made from alloy steel

KERN[®]



Measuring system

Combined Error:	0,500 %
Load cell connection:	4-wire
Measuring capacity [Max]:	20 Nm
Nominal sensitivity:	1,300

Environmental conditions

Maximum operating temperature:	65 °C
Minimum operating temperature:	-20 °C

Category

Brand:	Sauter
--------	--------

Packaging & shipping

Delivery:	24 h
Dimensions packaging (WxDxH):	120 x 90 x 85 mm
Gross weight:	421 g
Net weight:	380 g
Shipping method:	Parcel service

Construction

Cable length:	2 m
---------------	-----

Piktogramme

STANDARD



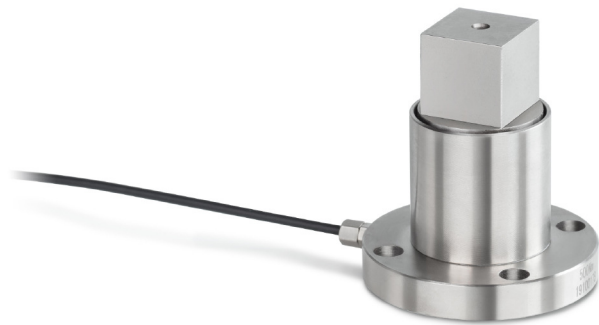
OPTION



KERN DC200-Y1

Static torque sensor made from alloy steel

KERN[®]



Measuring system

Combined Error:	0,500 %
Load cell connection:	4-wire
Measuring capacity [Max]:	200 Nm
Nominal sensitivity:	1,500

Environmental conditions

Maximum operating temperature:	65 °C
Minimum operating temperature:	-20 °C

Category

Brand:	Sauter
--------	--------

Packaging & shipping

Delivery:	24 h
Dimensions packaging (WxDxH):	120 x 90 x 85 mm
Gross weight:	421 g
Net weight:	380 g
Shipping method:	Parcel service

Construction

Cable length:	2 m
---------------	-----

Piktogramme

STANDARD



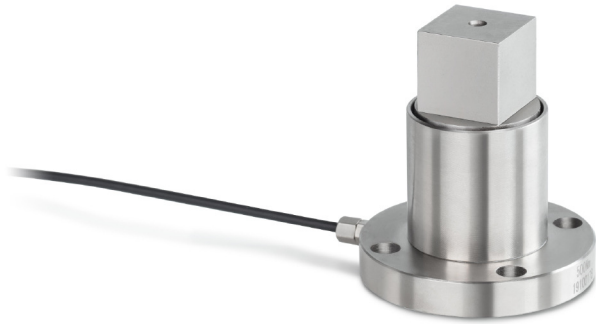
OPTION



KERN DC5-Y1

Static torque sensor made from alloy steel

KERN[®]



Measuring system

Combined Error:	0,500 %
Load cell connection:	4-wire
Measuring capacity [Max]:	5 Nm
Nominal sensitivity:	1,500

Environmental conditions

Maximum operating temperature:	65 °C
Minimum operating temperature:	-20 °C

Category

Brand:	Sauter
--------	--------

Packaging & shipping

Delivery:	24 h
Dimensions packaging (WxDxH):	120 x 90 x 85 mm
Gross weight:	421 g
Net weight:	380 g
Shipping method:	Parcel service

Construction

Cable length:	2 m
---------------	-----

Piktogramme

STANDARD



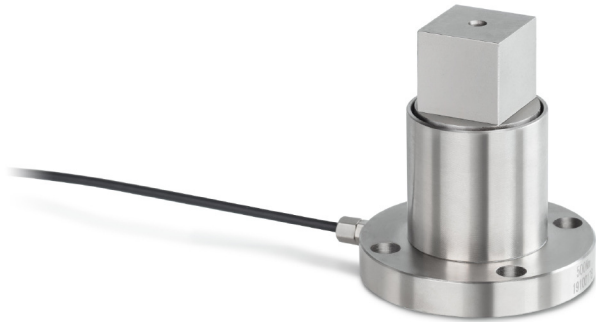
OPTION



KERN DC50-Y1

Static torque sensor made from alloy steel

KERN[®]



Measuring system

Combined Error:	0,500 %
Load cell connection:	4-wire
Measuring capacity [Max]:	50 Nm
Nominal sensitivity:	1,700

Environmental conditions

Maximum operating temperature:	65 °C
Minimum operating temperature:	-20 °C

Category

Brand:	Sauter
--------	--------

Packaging & shipping

Delivery:	24 h
Dimensions packaging (WxDxH):	120 x 90 x 85 mm
Gross weight:	421 g
Net weight:	380 g
Shipping method:	Parcel service

Construction

Cable length:	2 m
---------------	-----

Piktogramme

STANDARD



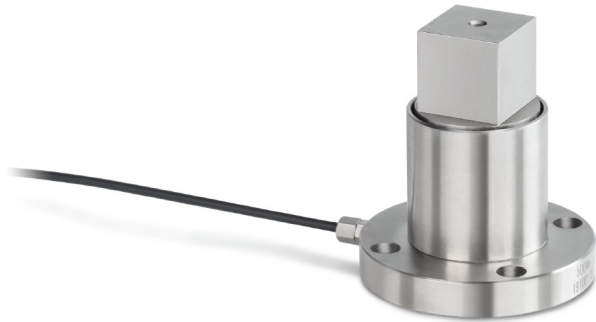
OPTION



KERN DC500-Y1

Static torque sensor made from alloy steel

KERN[®]



Measuring system

Combined Error:	0,500 %
Load cell connection:	4-wire
Measuring capacity [Max]:	500 Nm
Nominal sensitivity:	1,500

Environmental conditions

Maximum operating temperature:	65 °C
Minimum operating temperature:	-20 °C

Category

Brand:	Sauter
--------	--------

Packaging & shipping

Delivery:	24 h
Dimensions packaging (WxDxH):	120 x 90 x 85 mm
Gross weight:	421 g
Net weight:	380 g
Shipping method:	Parcel service

Construction

Cable length:	2 m
---------------	-----

Piktogramme

STANDARD



OPTION

