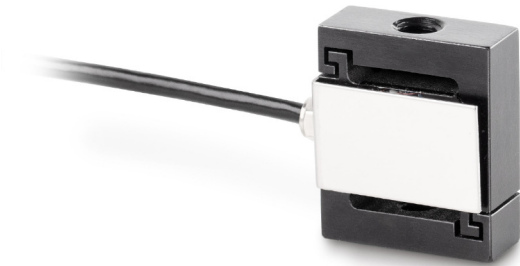


KERN CS1-Y1

Miniature S measuring cells and S load cells



Measuring system

Combined Error:	0,050 %
Load cell connection:	4-wire
Nominal sensitivity:	2
Weighing capacity [Max]:	1 kg

Environmental conditions

Maximum operating temperature:	70 °C
Minimum operating temperature:	-30 °C

Services (optional)

DAkkS Calibration certificate (Pressure):	963-261V
DAkkS Calibration certificate (Tensile):	963-161V
DAkkS Calibration certificate (Tensile/Pressure):	963-361V

Category

Brand:	Sauter
--------	--------

Packaging & shipping

Delivery:	24 h
Dimensions packaging (WxDxH):	150 x 105 x 40 mm
Gross weight:	71 g
Net weight:	30 g
Shipping method:	Parcel service

Construction

Cable length:	2 m
---------------	-----

KERN CS10-Y1

Miniature S measuring cells and S load cells



Measuring system

Combined Error:	0,050 %
Load cell connection:	4-wire
Nominal sensitivity:	2
Weighing capacity [Max]:	10 kg

Environmental conditions

Maximum operating temperature:	70 °C
Minimum operating temperature:	-30 °C

Services (optional)

DAkkS Calibration certificate (Pressure):	963-261V
DAkkS Calibration certificate (Tensile):	963-161V
DAkkS Calibration certificate (Tensile/Pressure):	963-361V

Category

Brand:	Sauter
--------	--------

Packaging & shipping

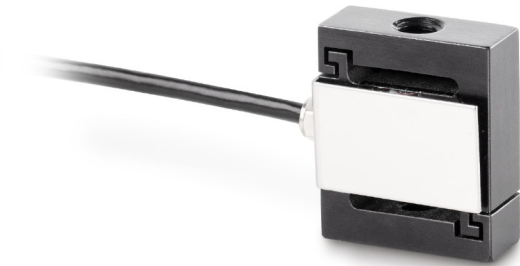
Delivery:	24 h
Dimensions packaging (WxDxH):	150 x 105 x 40 mm
Gross weight:	71 g
Net weight:	30 g
Shipping method:	Parcel service

Construction

Cable length:	2 m
---------------	-----

KERN CS2-Y1

Miniature S measuring cells and S load cells



Measuring system

Combined Error:	0,050 %
Load cell connection:	4-wire
Nominal sensitivity:	2
Weighing capacity [Max]:	2 kg

Environmental conditions

Maximum operating temperature:	70 °C
Minimum operating temperature:	-30 °C

Services (optional)

DAkkS Calibration certificate (Pressure):	963-261V
DAkkS Calibration certificate (Tensile):	963-161V
DAkkS Calibration certificate (Tensile/Pressure):	963-361V

Category

Brand:	Sauter
--------	--------

Packaging & shipping

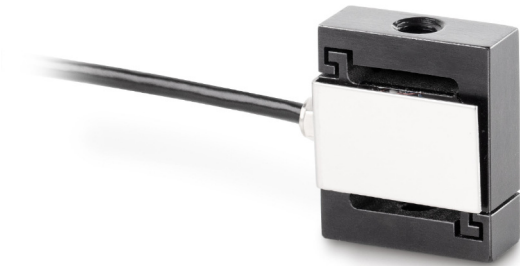
Delivery:	24 h
Dimensions packaging (WxDxH):	150 x 105 x 40 mm
Gross weight:	71 g
Net weight:	30 g
Shipping method:	Parcel service

Construction

Cable length:	2 m
---------------	-----

KERN CS20-Y1

Miniature S measuring cells and S load cells



Measuring system

Combined Error:	0,050 %
Load cell connection:	4-wire
Nominal sensitivity:	2
Weighing capacity [Max]:	20 kg

Environmental conditions

Maximum operating temperature:	70 °C
Minimum operating temperature:	-30 °C

Services (optional)

DAkkS Calibration certificate (Pressure):	963-261V
DAkkS Calibration certificate (Tensile):	963-161V
DAkkS Calibration certificate (Tensile/Pressure):	963-361V

Category

Brand:	Sauter
--------	--------

Packaging & shipping

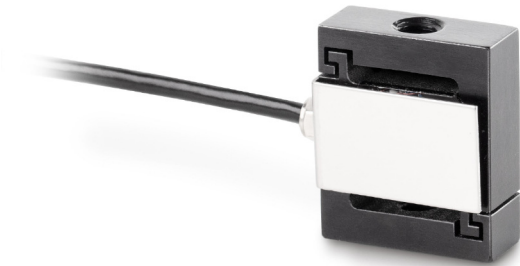
Delivery:	24 h
Dimensions packaging (WxDxH):	150 x 105 x 40 mm
Gross weight:	71 g
Net weight:	30 g
Shipping method:	Parcel service

Construction

Cable length:	2 m
---------------	-----

KERN CS5-Y1

Miniature S measuring cells and S load cells



Measuring system

Combined Error:	0,050 %
Load cell connection:	4-wire
Nominal sensitivity:	2
Weighing capacity [Max]:	5 kg

Environmental conditions

Maximum operating temperature:	70 °C
Minimum operating temperature:	-30 °C

Services (optional)

DAkkS Calibration certificate (Pressure):	963-261V
DAkkS Calibration certificate (Tensile):	963-161V
DAkkS Calibration certificate (Tensile/Pressure):	963-361V

Category

Brand:	Sauter
--------	--------

Packaging & shipping

Delivery:	24 h
Dimensions packaging (WxDxH):	150 x 105 x 40 mm
Gross weight:	71 g
Net weight:	30 g
Shipping method:	Parcel service

Construction

Cable length:	2 m
---------------	-----