



DATA SHEET

KTC-RF
INSTRUMENT TO CHECK COMMUNICATION

This instrument allows to test the force of the reception signal between:

- the tester and a BK-RF communication base
or between
- the tester and a network KPR-RF extender.

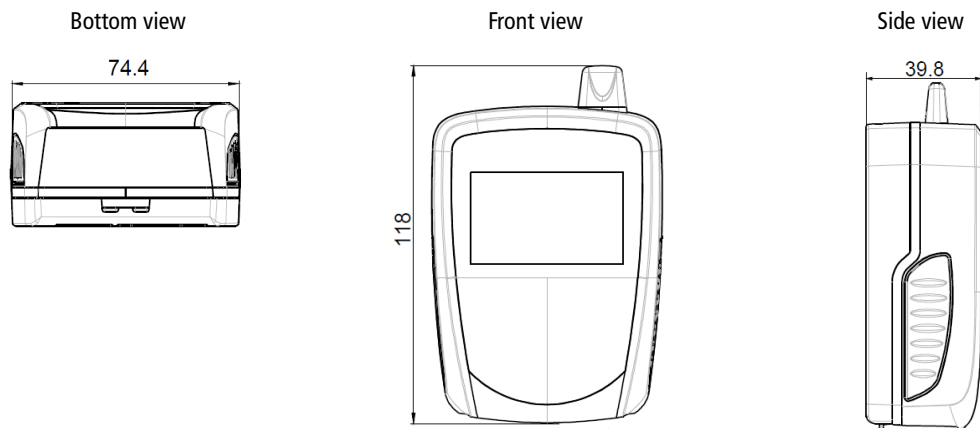
This signal force is expressed in percentage: the more the percentage is higher, the better is the reception signal force.



Technical features

Display	2 lines LCD screen / Dimensions: 45 x 17 mm
Control	1 On/Off and setting button
Material	Compatible with food industry environment ABS housing Sides and caps made of Elastomer
Operating temperature	From -20 to +70 °C
Storage temperature	From -40 to +85 °C
Protection	IP 40
Power supply	Type lithium 3.6 V
Environment	Air and neutral gases
Weight	160 g

Dimensions (mm)



Using the communication tester

- Turn on the instrument pressing for 5 s On/Off button



The instrument turns on and has two lines:

Up line: Channel number (1) and percentage of the reception signal force (2).

Channel number 0 is displayed when the instrument is turn on.

Bottom line: number corresponding to the instrument to test (communication base or network extender) (3).

The communication base number 230 is displayed when the instrument is turn on.

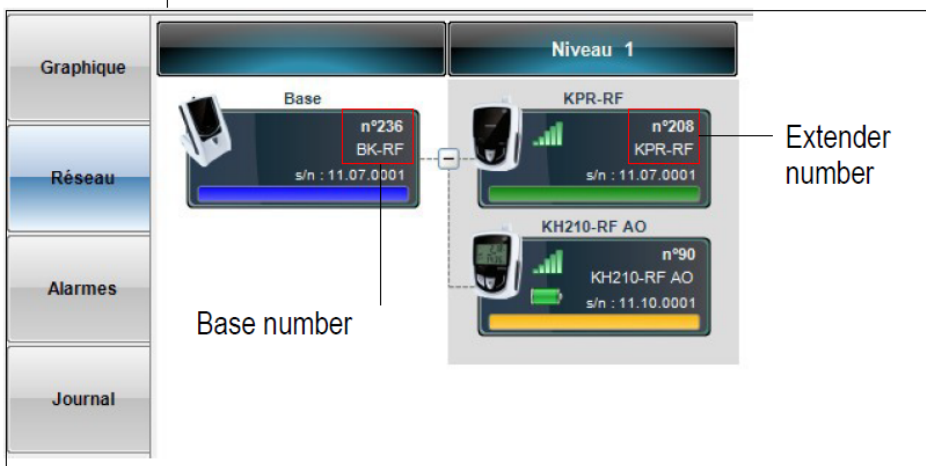
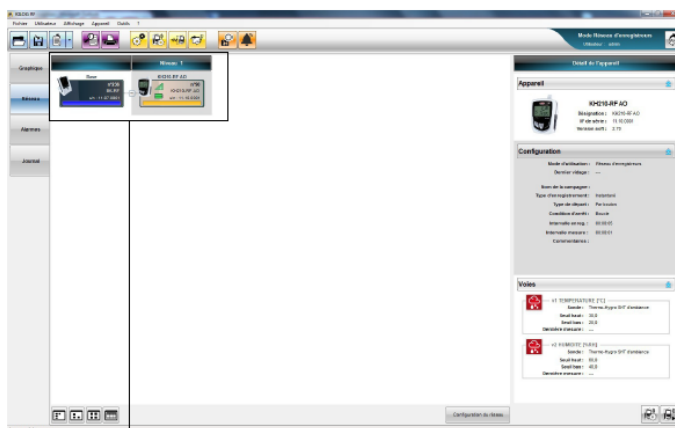
- Press On/Off button to increment by one the number of the instrument to test.
- If the instrument to test is a communication base: its number will be between 230 and 239. The channel number will be the last figure of the communication base.
- If the instrument to test is a network extender, its number will be between 200 and 209. The channel number will be the last figure of the communication base with which it is matched.
- Once the instrument to test is selected, wait for a few seconds until the percentage of the reception signal force becomes stable.

Identify the number of the instrument to test:

- Go to "Network" tab of Kilog-RF in "Network recorder" mode, the number will be noted in "Base" part for the communication base or in "Level 1 or 2" part for the extender (see below).



- (1): channel number
- (2): signal force
- (3): number of the instrument to test



- To turn off the tester, press for 5 s On/Off button.