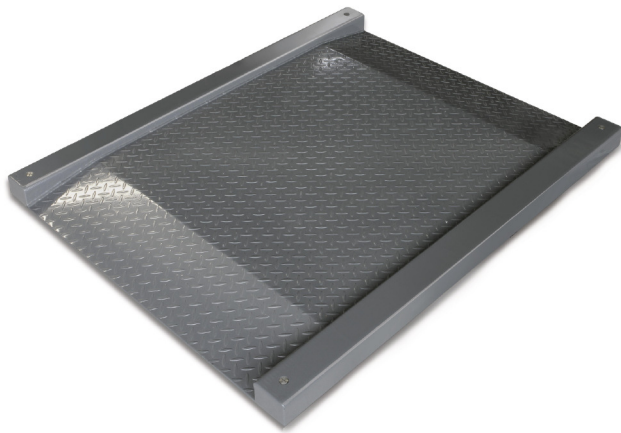


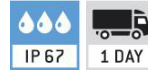
# KERN KFD 1500V20LM

Weighing bridge with IP67 protection with two integrated access ramps



## Piktogramme

### STANDARD



### FACTORY



### Measuring system

Readability [d]:	500 g
Weighing capacity [Max]:	1,500 t

### Technical data about verification

Minimum load [Min]:	10 kg
Verification by KERN possible:	yes
Verification value [e]:	500 g

### Services (optional)

DAkkS Certificate:	963-130
Verification:	965-230

### Category

Brand:	KERN
Category:	Platforms
Product Group:	Weighing bridge

### Packaging & shipping

Delivery:	48 h
Dimensions packaging (WxDxH):	1800 x 1400 x 150 mm
Gross weight:	180 kg
Net weight:	175 kg
Shipping method:	Freight forwarder

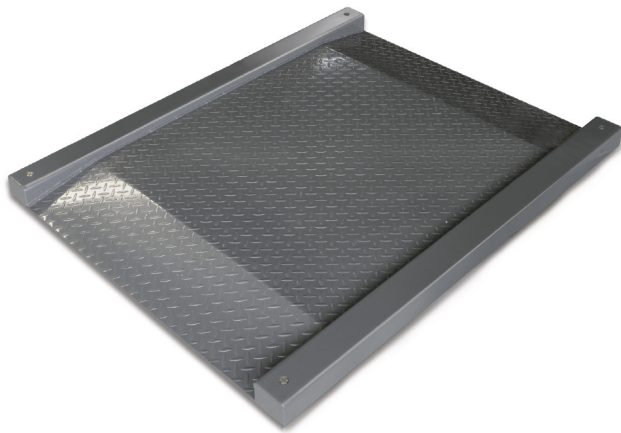
### Construction

Cable length:	5 m
Cable length of display device:	5 m
Dimensions of weighing plate (WxDxH):	1800 x 1400 x 78 mm
Material weighing plate:	Steel lacquered
Weighing surface (WxD):	1200 x 1200 mm

# KERN KFD 1500V20M

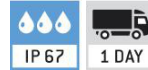
Weighing bridge with IP67 protection with two integrated access ramps

# KERN®



## Piktogramme

### STANDARD



### FACTORY



### Measuring system

Readability [d]:	500 g
Weighing capacity [Max]:	1,500 t

### Technical data about verification

Minimum load [Min]:	10 kg
Verification by KERN possible:	yes
Verification value [e]:	500 g

### Services (optional)

DAkkS Certificate:	963-130
Verification:	965-230

### Category

Brand:	KERN
Category:	Platforms
Product Group:	Weighing bridge

### Packaging & shipping

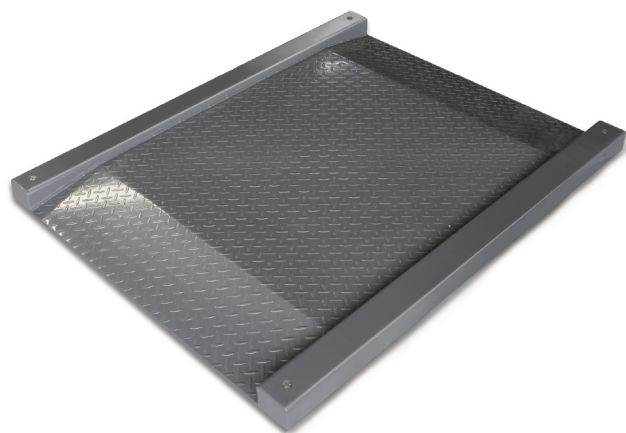
Delivery:	48 h
Dimensions packaging (WxDxH):	1610 x 1250 x 360 mm
Gross weight:	155 kg
Net weight:	125 kg
Shipping method:	Freight forwarder

### Construction

Cable length:	5 m
Cable length of display device:	5 m
Dimensions of weighing plate (WxDxH):	1600 x 1200 x 78 mm
Material weighing plate:	Steel lacquered
Weighing surface (WxD):	1000 x 1000 mm

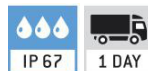
# KERN KFD600V20LM

Weighing bridge with IP67 protection with two integrated access ramps



## Piktogramme

### STANDARD



### FACTORY



### Measuring system

Readability [d]:	200 g
Weighing capacity [Max]:	600 kg

### Technical data about verification

Minimum load [Min]:	4 kg
Verification by KERN possible:	yes
Verification value [e]:	200 g

### Services (optional)

DAkkS Certificate:	963-130
Verification:	965-230

### Category

Brand:	KERN
Category:	Platforms
Product Group:	Weighing bridge

### Packaging & shipping

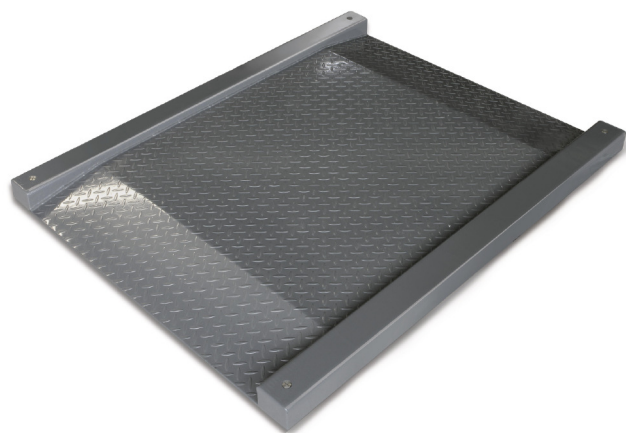
Delivery:	48 h
Dimensions packaging (WxDxH):	1400 x 1800 x 330 mm
Gross weight:	192 kg
Net weight:	154 kg
Shipping method:	Freight forwarder

### Construction

Cable length:	5 m
Cable length of display device:	5 m
Dimensions of weighing plate (WxDxH):	1800 x 1400 x 80 mm
Material weighing plate:	Steel lacquered
Weighing surface (WxD):	1800 x 1200 mm

# KERN KFD600V20M

Weighing bridge with IP67 protection with two integrated access ramps



## Measuring system

Adjustment options:	External calibration
Eccentric loading at 1/3 [Max]:	400 g
Linearity:	400 g
Readability [d]:	200 g
Recommended adjusting weight:	600 kg (M2)
Repeatability:	200 g
Stabilisation time under laboratory conditions:	2 s
Tare range:	-600 kg
Weighing capacity [Max]:	600 kg
Weighing system:	Strain gauge

## Display

Display digit height (large):	5,200 cm
-------------------------------	----------

## Technical data about verification

Minimum load [Min]:	4 kg
Periodic Verification for Italy:	969-112
Verification approval conforming to 2014/31/EU:	yes
Verification by KERN possible:	yes
Verification class:	III
Verification value [e]:	200 g

## Functions

Function to save totals:	yes
Vibration-free weighing (Animal weighing program):	yes

## Environmental conditions

Maximum humidity:	80 %
Maximum operating temperature:	40 °C
Minimum ambient temperature:	-10 °C
Minimum humidity:	0 %

## Power supply

Charging time:	10 h
Input voltage:	110 V - 230 V AC
Mains adapter:	Mains adapter external
Mains adapter/adapter included:	EURO
Operating time (Backlight off):	35 h
Operating time (Backlight on):	8 h
Rechargeable battery:	Rchrg. battery optional (factory)

## Services (optional)

Adjustment at the location of installation:	961-250
DAkkS Certificate:	963-130
Verification:	965-230

## Category

Brand:	KERN
Category:	Platforms
Product Group:	Weighing bridge

## Packaging & shipping

Delivery:	48 h
Dimensions packaging (WxDxH):	1610 x 1250 x 360 mm
Gross weight:	155 kg
Net weight:	125 kg
Shipping method:	Freight forwarder

## Construction

Cable length:	5 m
Cable length of display device:	5 m
Dimensions of weighing plate (WxDxH):	1600 x 1200 x 78 mm
Material weighing plate:	Metal lacquered
Revolving screw feet:	yes
Wall mount:	yes
Weighing surface (WxD):	1000 x 1000 mm

# KERN KFD600V20M

Weighing bridge with IP67 protection with two integrated access ramps



## Piktogramme

### STANDARD

---



### FACTORY

---

