

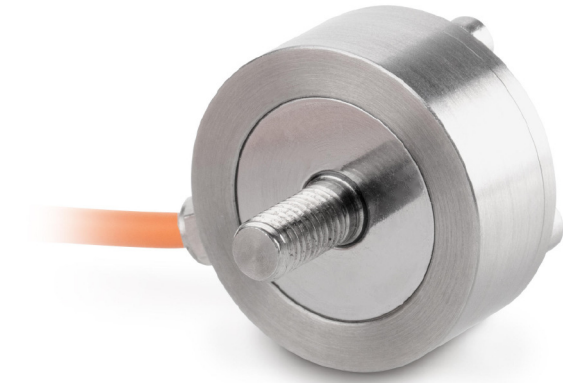
KERN CO10-Y2

Miniature button-type measuring cells made of stainless steel

KERN[®]

Construction

Cable length: 2 m



Measuring system

Combined Error:	0,500 %
Load cell connection:	4-wire
Nominal sensitivity:	1
OIML class:	G5
Weighing capacity [Max]:	10 kg

Environmental conditions

Maximum operating temperature:	40 °C
Minimum operating temperature:	0 °C

Services (optional)

DAkkS Calibration certificate (Pressure):	963-261V
DAkkS Calibration certificate (Tensile):	963-161V
DAkkS Calibration certificate (Tensile/Pressure):	963-361V

Category

Brand:	Sauter
--------	--------

Packaging & shipping

Delivery:	24 h
Dimensions packaging (WxDxH):	120 x 90 x 85 mm
Gross weight:	118 g
Net weight:	72 g
Shipping method:	Parcel service

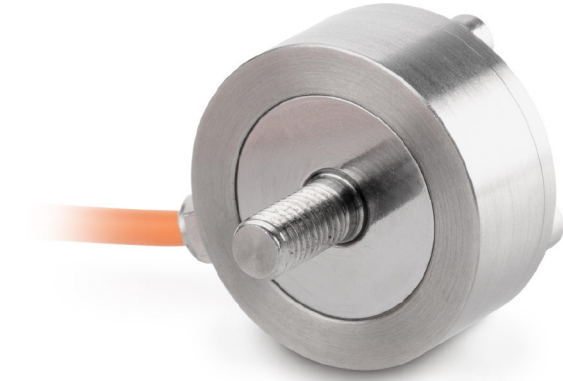
KERN CO 100-Y2

Miniature button-type measuring cells made of stainless steel

KERN[®]

Construction

Cable length: 2 m



Measuring system

Combined Error:	0,500 %
Load cell connection:	4-wire
Nominal sensitivity:	1,500
OIML class:	G5
Weighing capacity [Max]:	100 kg

Environmental conditions

Maximum operating temperature:	40 °C
Minimum operating temperature:	0 °C

Services (optional)

DAkkS Calibration certificate (Pressure):	963-262V
DAkkS Calibration certificate (Tensile):	963-162V
DAkkS Calibration certificate (Tensile/Pressure):	963-362V

Category

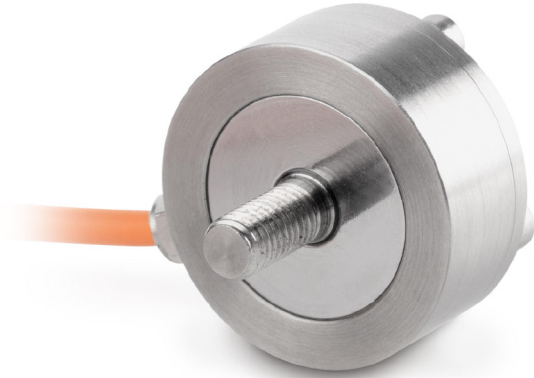
Brand:	Sauter
--------	--------

Packaging & shipping

Delivery:	24 h
Dimensions packaging (WxDxH):	120 x 90 x 85 mm
Gross weight:	493 g
Net weight:	455 g
Shipping method:	Parcel service

KERN CO 1000-Y2

Miniature button-type measuring cells made of stainless steel



Measuring system

Combined Error:	0,500 %
Load cell connection:	4-wire
Nominal sensitivity:	1,500
OIML class:	G5
Weighing capacity [Max]:	1 t

Environmental conditions

Maximum operating temperature:	40 °C
Minimum operating temperature:	0 °C

Services (optional)

Factory calibration certificate (Tensile):	961-164V
Factory calibration certificate (Tensile/Pressure):	961-364V

Category

Brand:	Sauter
--------	--------

Packaging & shipping

Delivery:	24 h
Dimensions packaging (WxDxH):	120 x 90 x 85 mm
Gross weight:	512 g
Net weight:	472 g
Shipping method:	Parcel service

Construction

Cable length:	2 m
---------------	-----

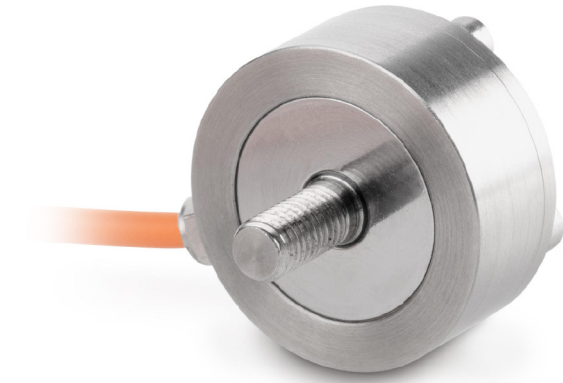
KERN CO20-Y2

Miniature button-type measuring cells made of stainless steel

KERN[®]

Construction

Cable length: 2 m



Measuring system

Combined Error:	0,500 %
Load cell connection:	4-wire
Nominal sensitivity:	1,500
OIML class:	G5
Weighing capacity [Max]:	20 kg

Environmental conditions

Maximum operating temperature:	40 °C
Minimum operating temperature:	0 °C

Services (optional)

DAkkS Calibration certificate (Pressure):	963-261V
DAkkS Calibration certificate (Tensile):	963-161V
DAkkS Calibration certificate (Tensile/Pressure):	963-361V

Category

Brand:	Sauter
--------	--------

Packaging & shipping

Delivery:	24 h
Dimensions packaging (WxDxH):	120 x 90 x 85 mm
Gross weight:	111 g
Net weight:	72 g
Shipping method:	Parcel service

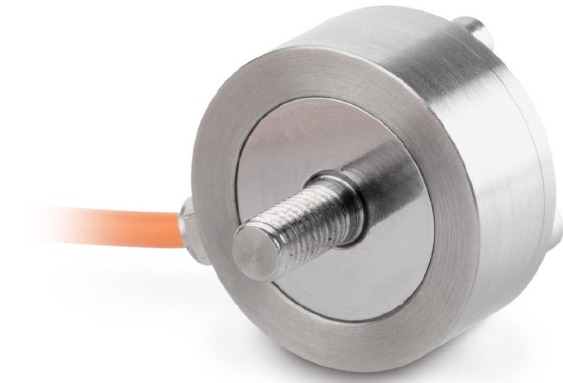
KERN CO 200-Y2

Miniature button-type measuring cells made of stainless steel

KERN[®]

Construction

Cable length: 2 m



Measuring system

Combined Error:	0,500 %
Load cell connection:	4-wire
Nominal sensitivity:	1,500
OIML class:	G5
Weighing capacity [Max]:	200 kg

Environmental conditions

Maximum operating temperature:	40 °C
Minimum operating temperature:	0 °C

Services (optional)

DAkkS Calibration certificate (Pressure):	963-262V
DAkkS Calibration certificate (Tensile):	963-162V
DAkkS Calibration certificate (Tensile/Pressure):	963-362V

Category

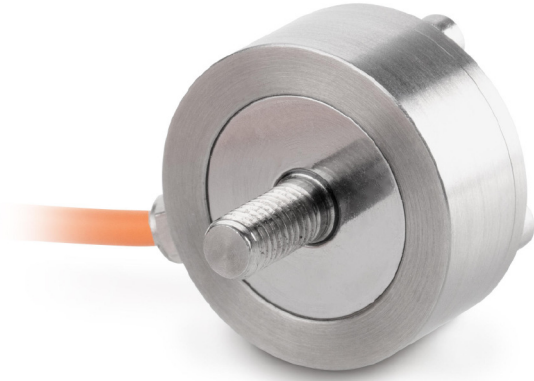
Brand:	Sauter
--------	--------

Packaging & shipping

Delivery:	24 h
Dimensions packaging (WxDxH):	120 x 90 x 85 mm
Gross weight:	504 g
Net weight:	466 g
Shipping method:	Parcel service

KERN CO 2000-Y2

Miniature button-type measuring cells made of stainless steel



Measuring system

Combined Error:	0,500 %
Load cell connection:	4-wire
Nominal sensitivity:	1,500
OIML class:	G5
Weighing capacity [Max]:	2 t

Environmental conditions

Maximum operating temperature:	40 °C
Minimum operating temperature:	0 °C

Services (optional)

Factory calibration certificate (Tensile):	961-164V
Factory calibration certificate (Tensile/Pressure):	961-364V

Category

Brand:	Sauter
--------	--------

Packaging & shipping

Delivery:	24 h
Dimensions packaging (WxDxH):	120 x 90 x 85 mm
Gross weight:	562 g
Net weight:	524 g
Shipping method:	Parcel service

Construction

Cable length:	2 m
---------------	-----

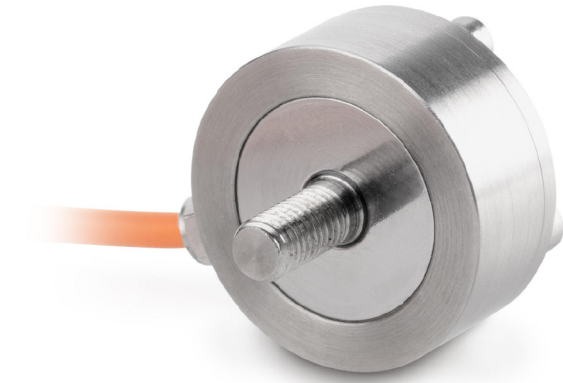
KERN CO50-Y2

Miniature button-type measuring cells made of stainless steel

KERN[®]

Construction

Cable length: 2 m



Measuring system

Combined Error:	0,500 %
Load cell connection:	4-wire
Nominal sensitivity:	1,500
OIML class:	G5
Weighing capacity [Max]:	50 kg

Environmental conditions

Maximum operating temperature:	40 °C
Minimum operating temperature:	0 °C

Services (optional)

DAkkS Calibration certificate (Pressure):	963-261V
DAkkS Calibration certificate (Tensile):	963-161V
DAkkS Calibration certificate (Tensile/Pressure):	963-361V

Category

Brand:	Sauter
--------	--------

Packaging & shipping

Delivery:	24 h
Dimensions packaging (WxDxH):	120 x 90 x 85 mm
Gross weight:	118 g
Net weight:	72 g
Shipping method:	Parcel service

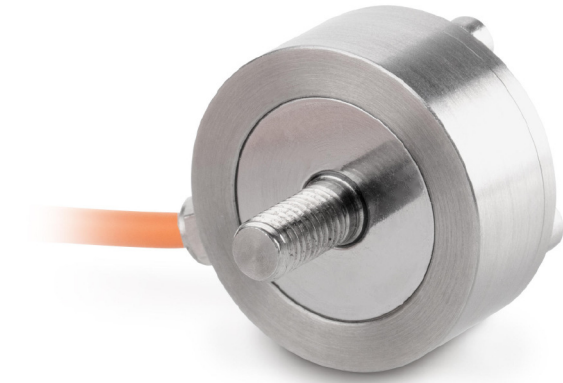
KERN CO500-Y2

Miniature button-type measuring cells made of stainless steel

KERN[®]

Construction

Cable length: 2 m



Measuring system

Combined Error:	0,500 %
Load cell connection:	4-wire
Nominal sensitivity:	1,500
OIML class:	G5
Weighing capacity [Max]:	500 kg

Environmental conditions

Maximum operating temperature:	40 °C
Minimum operating temperature:	0 °C

Services (optional)

DAkkS Calibration certificate (Pressure):	963-263V
DAkkS Calibration certificate (Tensile):	963-163V
DAkkS Calibration certificate (Tensile/Pressure):	963-363V

Category

Brand:	Sauter
--------	--------

Packaging & shipping

Delivery:	24 h
Dimensions packaging (WxDxH):	120 x 90 x 85 mm
Gross weight:	516 g
Net weight:	472 g
Shipping method:	Parcel service