



KERN & Sohn GmbH

Ziegelei 1

D-72336 Balingen

E-Mail: info@kern-sohn.com

Phone: +49-[0]7433- 9933-0

Fax: +49-[0]7433-9933-149

Internet: www.kern-sohn.com

Installation Instructions

Verification plug

KERN KIB-A12

Version 1.0

2019-02

GB

KIB-A12-IA-e-1910



KERN KIB-A12

Version 1.0 2019-02

Installation instructions for the verification plug

Contents

1	Installation.....	3
1.1	Connect verification plug	3
1.2	Seal the verification plug:	10
1.3	Complete the installation	10
1.4	Error report Err5.....	10
2	How to connect the platform	11

English

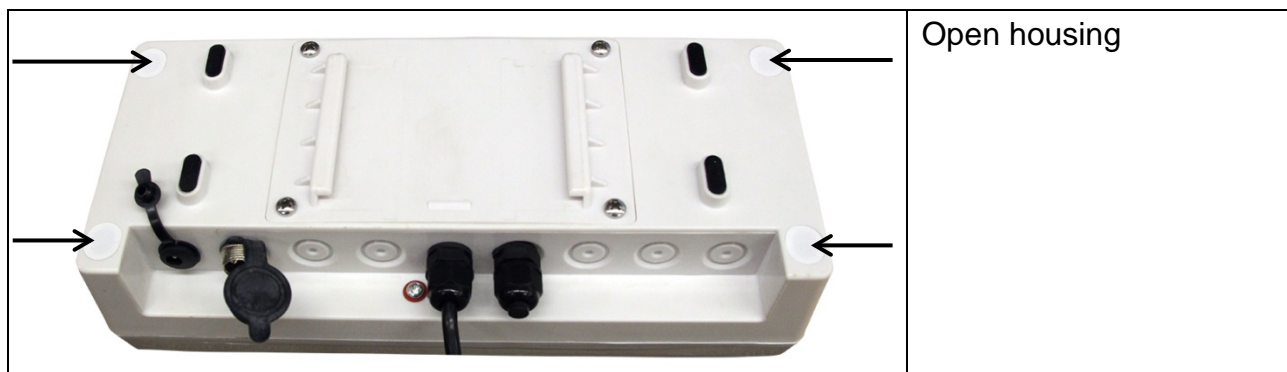
1 Installation

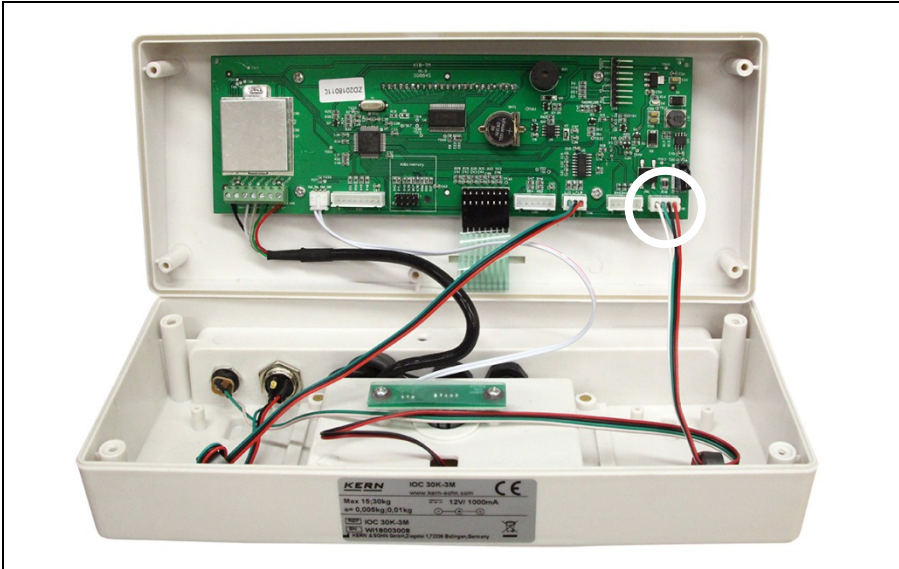
- Connect the verification plug to the KIB-TM display device as follows and then adjust the weighing system. Once it has been successfully adjusted, the display device is linked to the verification plug.

1.1 Connect verification plug

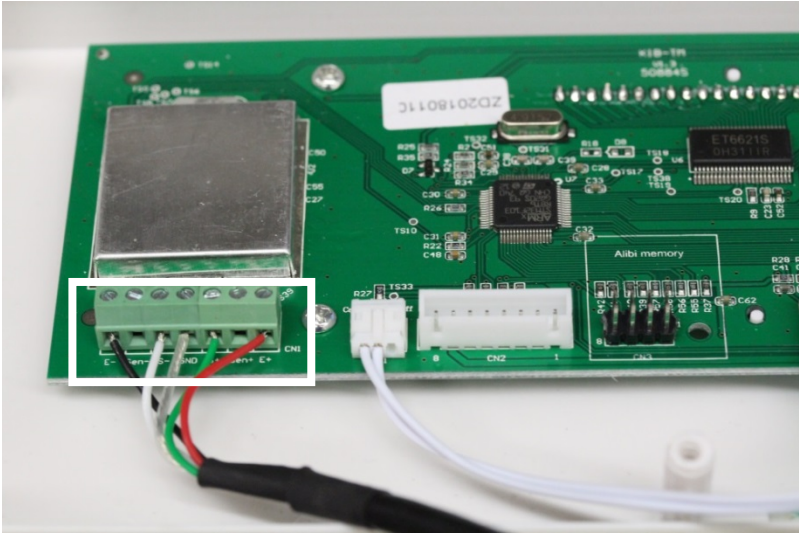
Connect the chip in the verification plug to CN7 (5 Pin) in the display device.

KIB-TM Main circuit board	Line colour	Connect female	Connect male	Load cell
E+ / Sen+	Red	1	1	EXC+
S+	Green	3	3	SIG+
GND	Shield	5	5	GND
S-	White	4	4	SIG-
E- / Sen-	Black	2	2	EXC-
Identchip main board	Line colour	Connect female	Connect male	
IC GND	Yellow	7	7: Identchip GND	
IC signal	Brown	6	6: Identchip signal	

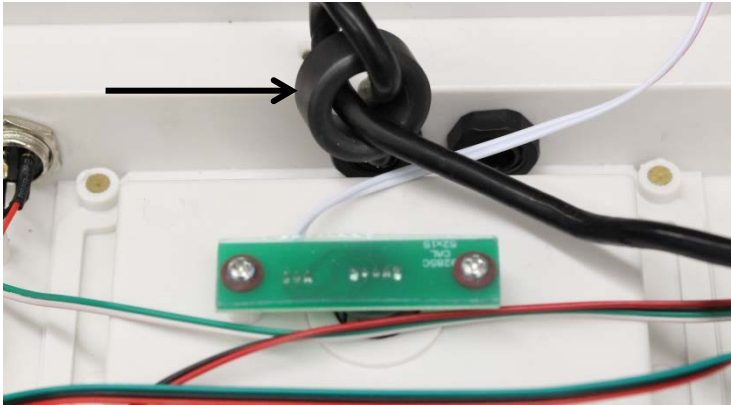




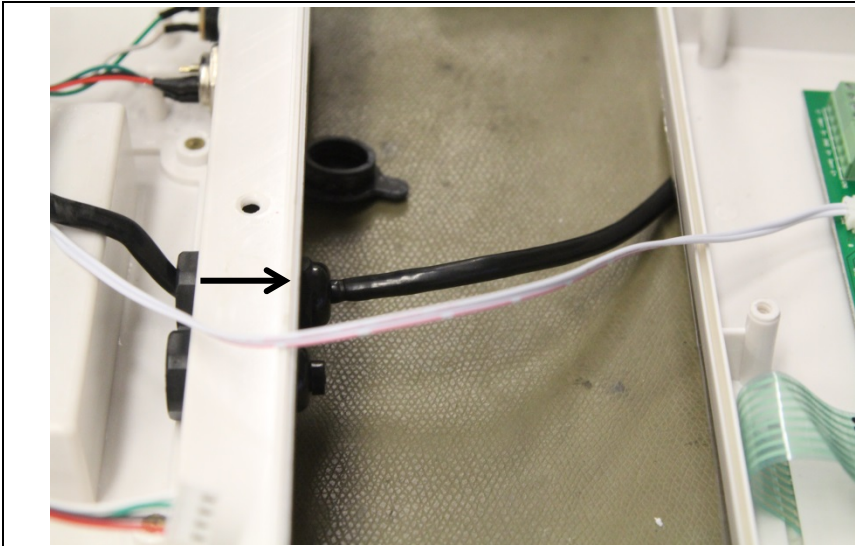
Remove the CN8/power plug.



Undo all cables



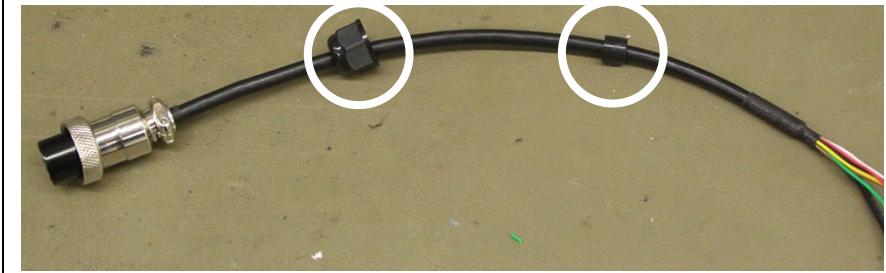
Remove ferrite core



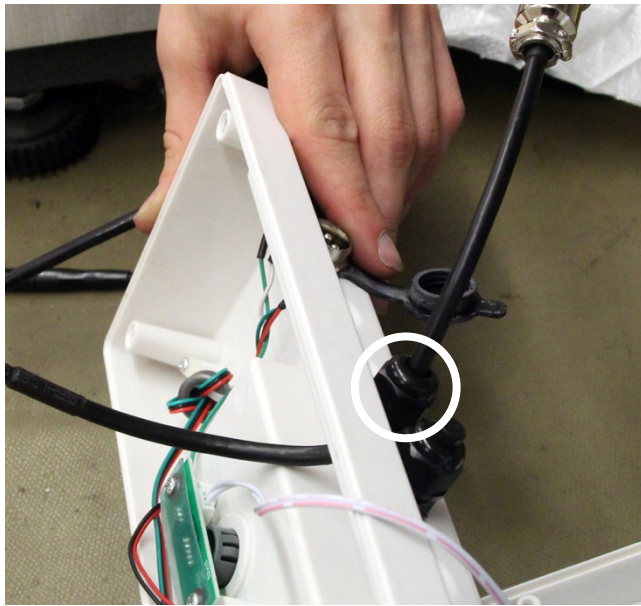
Pull cable through



Reinsert sealing ring



Attach both parts (see fig.) to the verification plug cable

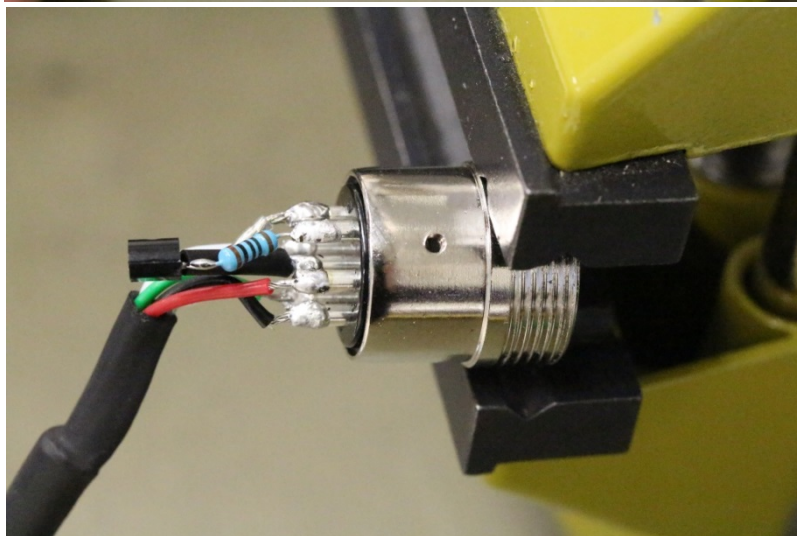
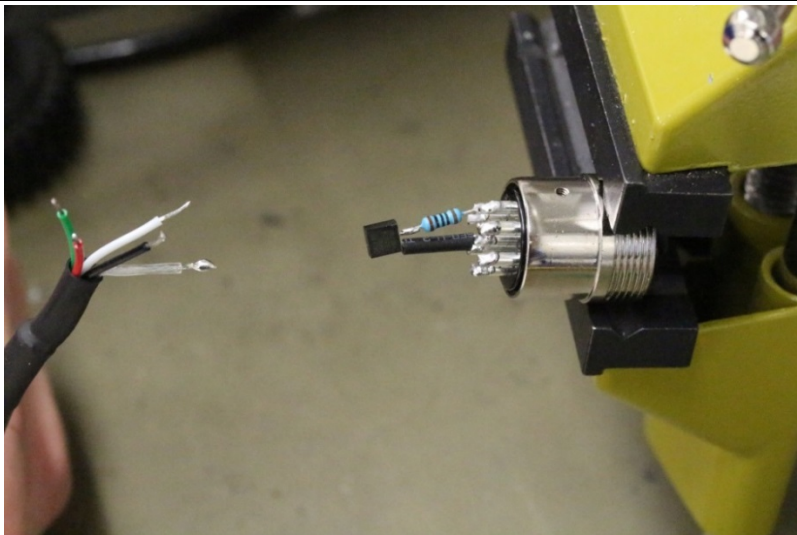


Pull cable through and put on the cover cap

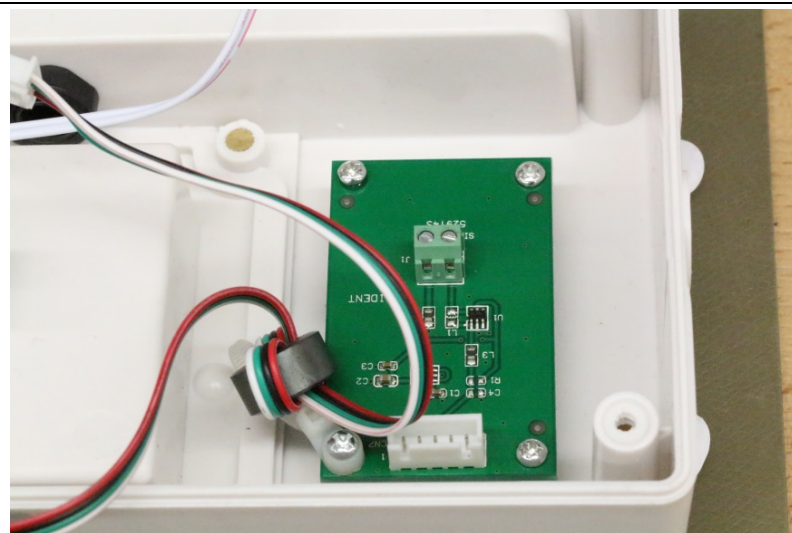


Remove screws as shown in the diagram





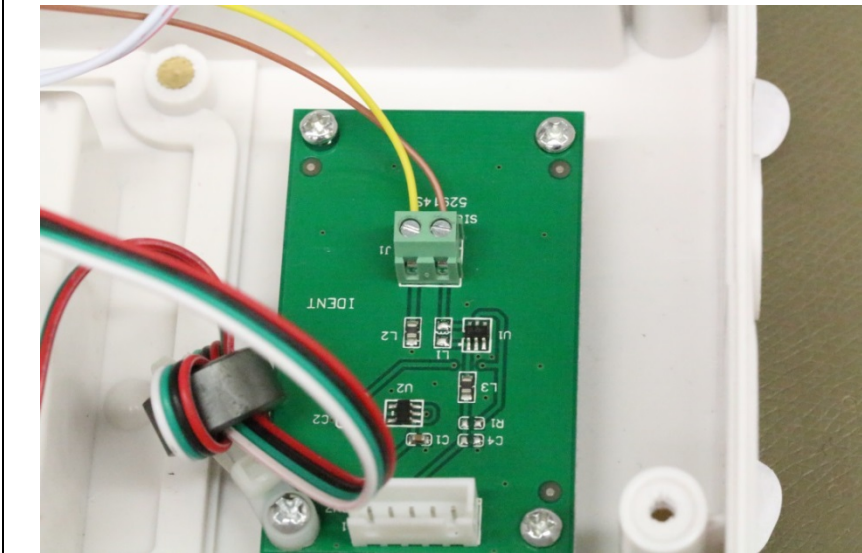
Slide the shrink tubing over the cable of the load cell so that it can be sealed later.
Then solder the cable as shown in the wiring diagram (see chap. 1.1).



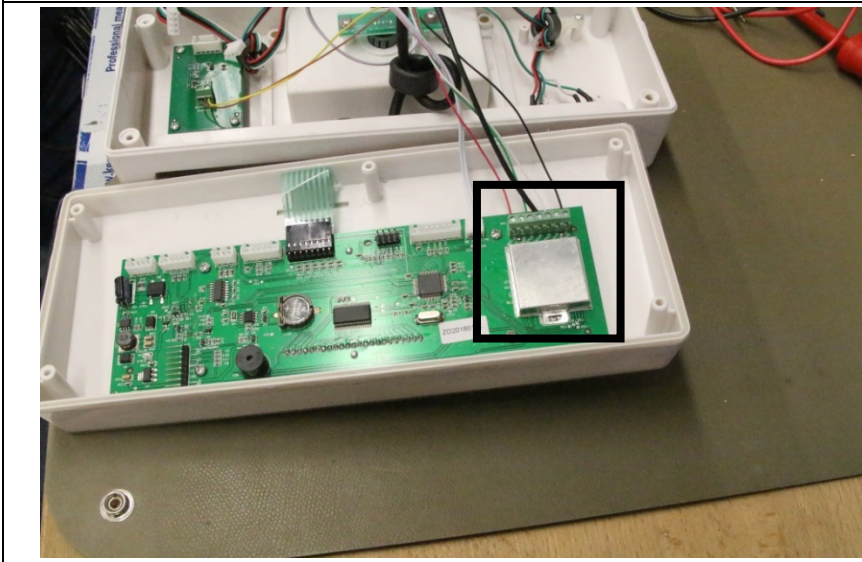
Insert the board as shown in the diagram and secure with the 4 screws.



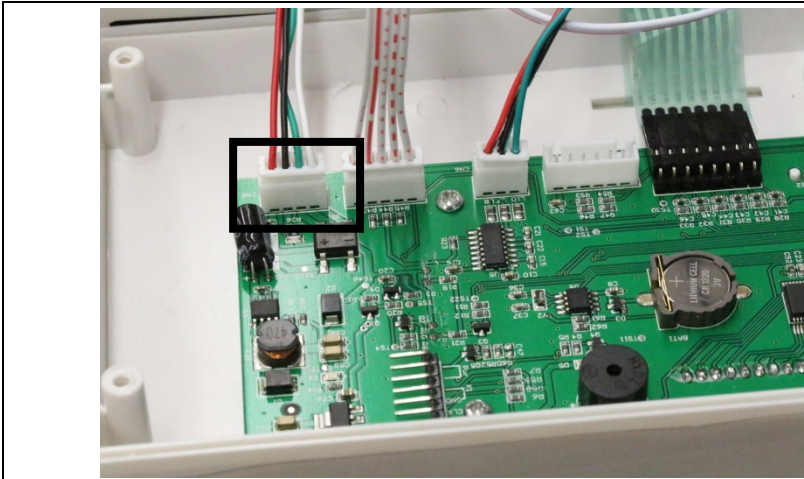
Reinsert the ferrite core



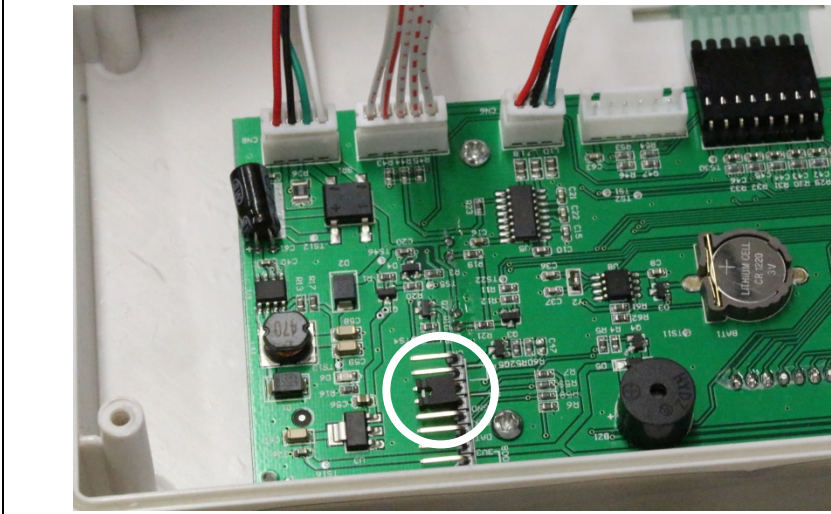
Connect the cable as shown in the connection plan



Connect the remaining cables to the board



Reconnect CN8 externally



Close K1 jumper, K1 activates the verification plug.



The verification plug does not function without K1.

1.2 Seal the verification plug:



(Fig. Verification plug sealed)



Always seal the verification plug with a self-destructive seal.
Pull the shrink tubing over the connecting cables of the load cell or junction box and seal with a self-destructive seal.

1.3 Complete the installation

After the verification plug has been installed

- Check software version
- Adjust the scale, K1 jumper must be set.



After adjustment, the scale must be switched off **without fail** and then switched back on again.
The verification plug is finally configured correctly.

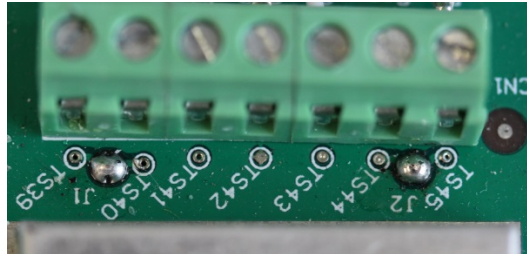
1.4 Error report Err5

Err 5 is shown if:

- The verification plug is not connected correctly
- The verification plug is defective
- The wrong verification plug has been connected

2 How to connect the platform

- Disconnect the display unit from the power supply.
- Solder the individual wires of the load cell cable to the printed circuit board



It is necessary to ensure both soldering points J1 and J2 are always bridged.