

KERN UID1500K-1DM



High-resolution dual-range pallet scale with calibration approval [M] and a large number of data interfaces



Measuring system

Adjustment options:	External calibration
Eccentric loading at 1/3 [Max]:	1 kg 2,500 kg
Linearity:	600 g 1500 g
Load cell connection:	4-wire
Number of weighing ranges:	2
Readability [d]:	200 g 500 g
Repeatability:	200 g 500 g
Resolution:	3 3.000
Stabilisation time under laboratory conditions:	4 s
Tare range:	-1,500 t
Warm up time:	10 min 10 min
Weighing capacity [Max]:	600 kg 1500 kg
Weighing system:	Strain gauge
Weighing units:	kg tJ HJ g oz PCS lb

Display

Display digit height (large):	2,500 cm
Display digit height (small):	2,500 cm

Technical data about verification

Minimum load [Min]:	4 kg 10 kg
Periodic Verification for Italy:	969-112
Verification approval conforming to 2014/31/EU:	yes
Verification by KERN possible:	yes
Verification class:	III
Verification value [e]:	200 g 500 g

Functions

Counting function:	yes
Data hold function:	yes
Percentage determination:	yes
Time display:	yes
Vibration-free weighing (Animal weighing program):	yes
Weighing with tolerance range:	yes

Environmental conditions

Maximum humidity:	95 %
Maximum operating temperature:	40 °C
Minimum ambient temperature:	-10 °C
Minimum humidity:	10 %

Power supply

Battery:	no battery
Charging time:	3 h
Input voltage:	100V-240V AC 50/60Hz 0,400 Amax
Mains adapter:	Mains adapter external
Mains adapter/adaptor included:	EURO US UK
Operating time (Backlight off):	43 h
Operating time (Backlight on):	26 h
Rechargeable battery:	Rchrg. battery optional - intern

Services (optional)

Adjustment at the location of installation:	961-250
DAkkS Certificate:	963-130
Verification:	965-230

Category

Brand:	KERN
Category:	Balances
Product Group:	Pallet scale

Packaging & shipping

Delivery:	48 h
Dimensions packaging (WxDxH):	1240 x 890 x 250 mm
Gross weight:	65 kg
Net weight:	44 kg
Shipping method:	Freight forwarder

Construction

Cable length:	5 m
Cable length of display device:	5 m
Dimensions of display device (WxDxH):	268 x 115 x 80 mm

KERN UID1500K-1DM

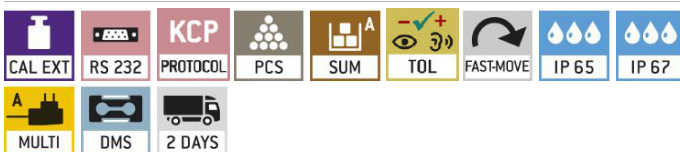


High-resolution dual-range pallet scale with calibration approval [M] and a large number of data interfaces

Dimensions of weighing plate (WxDxH):	1190 x 840 x 110 mm
Level indicator:	yes
Revolving screw feet:	yes
Wall mount:	yes
Weighing surface (WxD):	1195 x 840 mm

Piktogramme

STANDARD



OPTION



FACTORY



KERN UID1500K-1M



High-resolution dual-range pallet scale with calibration approval [M] and a large number of data interfaces



Measuring system

Adjustment options:	External calibration
Eccentric loading at 1/3 [Max]:	2,500 kg
Linearity:	1,500 kg
Load cell connection:	4-wire
Number of weighing ranges:	1
Readability [d]:	500 g
Repeatability:	500 g
Resolution:	3000
Stabilisation time under laboratory conditions:	4 s
Tare range:	-1,500 t
Warm up time:	10 min
Weighing capacity [Max]:	1,500 t
Weighing system:	Strain gauge
Weighing units:	kg tJ HJ g oz PCS lb

Display

Display digit height (large):	2,500 cm
Display digit height (small):	2,500 cm

Technical data about verification

Minimum load [Min]:	10 kg
Periodic Verification for Italy:	969-112
Verification approval conforming to 2014/31/EU:	yes
Verification by KERN possible:	yes
Verification class:	III
Verification value [e]:	500 g

Functions

Counting function:	yes
Data hold function:	yes
Percentage determination:	yes
Time display:	yes
Vibration-free weighing (Animal weighing program):	yes
Weighing with tolerance range:	yes

Environmental conditions

Maximum humidity:	95 %
Maximum operating temperature:	40 °C
Minimum ambient temperature:	-10 °C
Minimum humidity:	10 %

Power supply

Battery:	no battery
Charging time:	3 h
Input voltage:	100V-240V AC 50/60Hz 0,400 Amax
Mains adapter:	Mains adapter external
Mains adapter/adaptor included:	EURO US UK
Operating time (Backlight off):	43 h
Operating time (Backlight on):	26 h
Rechargeable battery:	Rchrg. battery optional - intern

Services (optional)

Adjustment at the location of installation:	961-250
DAkkS Certificate:	963-130
Verification:	965-230

Category

Brand:	KERN
Category:	Balances
Product Group:	Pallet scale

Packaging & shipping

Delivery:	48 h
Dimensions packaging (WxDxH):	1240 x 890 x 250 mm
Gross weight:	65 kg
Net weight:	44 kg
Shipping method:	Freight forwarder

Construction

Cable length:	5 m
Cable length of display device:	5 m
Dimensions of display device (WxDxH):	268 x 115 x 80 mm

KERN UID1500K-1M

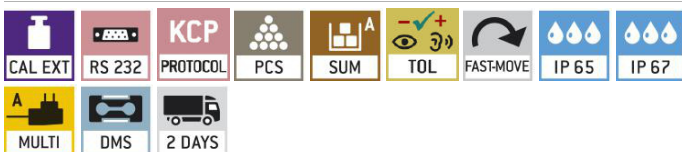


High-resolution dual-range pallet scale with calibration approval [M] and a large number of data interfaces

Dimensions of weighing plate (WxDxH):	1190 x 840 x 110 mm
Level indicator:	yes
Revolving screw feet:	yes
Wall mount:	yes
Weighing surface (WxD):	1195 x 840 mm

Piktogramme

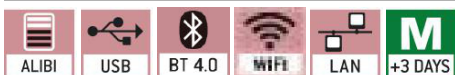
STANDARD



OPTION



FACTORY



KERN UID3000K-ODM



High-resolution dual-range pallet scale with calibration approval [M] and a large number of data interfaces



Measuring system

Adjustment options:	External calibration
Eccentric loading at 1/3 [Max]:	2,500 kg 5 kg
Linearity:	1,500 kg 3 kg
Load cell connection:	4-wire
Number of weighing ranges:	2
Readability [d]:	500 g 1000 g
Repeatability:	500 g 1000 g
Resolution:	3 3.000
Stabilisation time under laboratory conditions:	4 s
Tare range:	-3 t
Warm up time:	10 min 10 min
Weighing capacity [Max]:	1,500 t 3 t
Weighing system:	Strain gauge
Weighing units:	kg tJ HJ g oz PCS lb

Display

Display digit height (large):	2,500 cm
Display digit height (small):	2,500 cm

Technical data about verification

Minimum load [Min]:	10 kg 20 kg
Periodic Verification for Italy:	969-112
Verification approval conforming to 2014/31/EU:	yes
Verification by KERN possible:	yes
Verification class:	III
Verification value [e]:	500 g 1000 g

Functions

Counting function:	yes
Data hold function:	yes
Percentage determination:	yes
Time display:	yes
Vibration-free weighing (Animal weighing program):	yes
Weighing with tolerance range:	yes

Environmental conditions

Maximum humidity:	95 %
Maximum operating temperature:	40 °C
Minimum ambient temperature:	-10 °C
Minimum humidity:	10 %

Power supply

Battery:	no battery
Charging time:	3 h
Input voltage:	100V-240V AC 50/60Hz 0,400 Amax
Mains adapter:	Mains adapter external
Mains adapter/adaptor included:	EURO US UK
Operating time (Backlight off):	43 h
Operating time (Backlight on):	26 h
Rechargeable battery:	Rchrg. battery optional - intern

Services (optional)

Adjustment at the location of installation:	961-252
DAkkS Certificate:	963-132
Verification:	965-232

Category

Brand:	KERN
Category:	Balances
Product Group:	Pallet scale

Packaging & shipping

Delivery:	48 h
Dimensions packaging (WxDxH):	1240 x 890 x 250 mm
Gross weight:	65 kg
Net weight:	44 kg
Shipping method:	Freight forwarder

Construction

Cable length:	5 m
Cable length of display device:	5 m
Dimensions of display device (WxDxH):	268 x 115 x 80 mm

KERN UID3000K-ODM

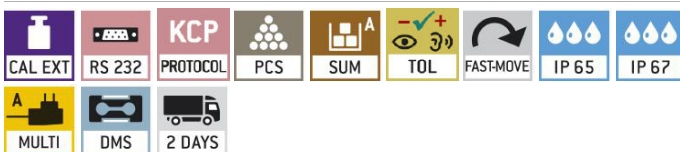


High-resolution dual-range pallet scale with calibration approval [M] and a large number of data interfaces

Dimensions of weighing plate (WxDxH):	1190 x 840 x 110 mm
Level indicator:	yes
Revolving screw feet:	yes
Wall mount:	yes
Weighing surface (WxD):	1195 x 840 mm

Piktogramme

STANDARD



OPTION



FACTORY



KERN UID3000K-0M



High-resolution dual-range pallet scale with calibration approval [M] and a large number of data interfaces



Measuring system

Adjustment options:	External calibration
Eccentric loading at 1/3 [Max]:	5 kg
Linearity:	3 kg
Load cell connection:	4-wire
Number of weighing ranges:	1
Readability [d]:	1 kg
Repeatability:	1 kg
Resolution:	3000
Stabilisation time under laboratory conditions:	4 s
Tare range:	-3 t
Warm up time:	10 min
Weighing capacity [Max]:	3 t
Weighing system:	Strain gauge
Weighing units:	kg tJ HJ g oz PCS lb

Display

Display digit height (large):	2,500 cm
Display digit height (small):	2,500 cm

Technical data about verification

Minimum load [Min]:	20 kg
Periodic Verification for Italy:	969-112
Verification approval conforming to 2014/31/EU:	yes
Verification by KERN possible:	yes
Verification class:	III
Verification value [e]:	1 kg

Functions

Counting function:	yes
Data hold function:	yes
Percentage determination:	yes
Time display:	yes
Vibration-free weighing (Animal weighing program):	yes
Weighing with tolerance range:	yes

Environmental conditions

Maximum humidity:	95 %
Maximum operating temperature:	40 °C
Minimum ambient temperature:	-10 °C
Minimum humidity:	10 %

Power supply

Battery:	no battery
Charging time:	3 h
Input voltage:	100V-240V AC 50/60Hz 0,400 Amax
Mains adapter:	Mains adapter external
Mains adapter/adaptor included:	EURO US UK
Operating time (Backlight off):	43 h
Operating time (Backlight on):	26 h
Rechargeable battery:	Rchrg. battery optional - intern

Services (optional)

Adjustment at the location of installation:	961-252
DAkkS Certificate:	963-132
Verification:	965-232

Category

Brand:	KERN
Category:	Balances
Product Group:	Pallet scale

Packaging & shipping

Delivery:	48 h
Dimensions packaging (WxDxH):	1270 x 900 x 260 mm
Gross weight:	65 kg
Net weight:	44 kg
Shipping method:	Freight forwarder

Construction

Cable length:	5 m
Cable length of display device:	5 m
Dimensions of display device (WxDxH):	268 x 115 x 80 mm

KERN UID3000K-0M

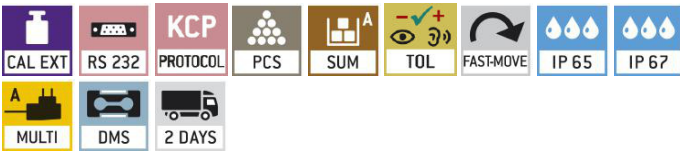


High-resolution dual-range pallet scale with calibration approval [M] and a large number of data interfaces

Dimensions of weighing plate (WxDxH):	1195 x 840 x 110 mm
Level indicator:	yes
Revolving screw feet:	yes
Wall mount:	yes
Weighing surface (WxD):	1195 x 840 mm

Piktogramme

STANDARD



OPTION



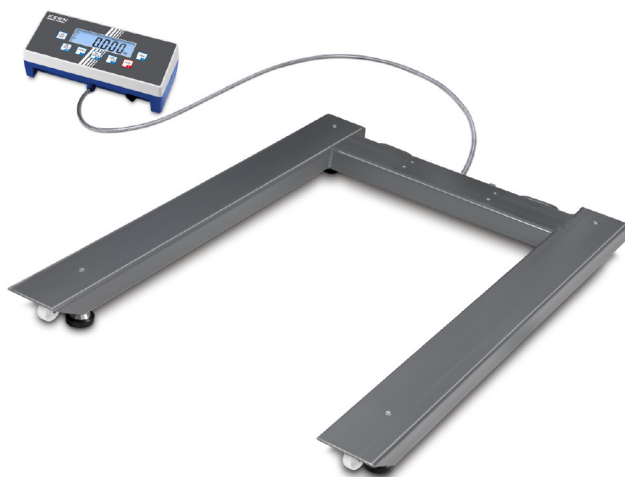
FACTORY



KERN UID600K-1DM



High-resolution dual-range pallet scale with calibration approval [M] and a large number of data interfaces



Measuring system

Adjustment options:	External calibration
Eccentric loading at 1/3 [Max]:	500 g 1000 g
Linearity:	300 g 600 g
Load cell connection:	4-wire
Number of weighing ranges:	2
Readability [d]:	100 g 200 g
Repeatability:	100 g 200 g
Resolution:	3 3.000
Stabilisation time under laboratory conditions:	4 s
Tare range:	-600 kg
Warm up time:	10 min 10 min
Weighing capacity [Max]:	300 kg 600 kg
Weighing system:	Strain gauge
Weighing units:	kg tJ HJ g oz PCS lb

Display

Display digit height (large):	2,500 cm
Display digit height (small):	2,500 cm

Technical data about verification

Minimum load [Min]:	2 kg 4 kg
Periodic Verification for Italy:	969-112
Verification approval conforming to 2014/31/EU:	yes
Verification by KERN possible:	yes
Verification class:	III
Verification value [e]:	100 g 200 g

Functions

Counting function:	yes
Data hold function:	yes
Percentage determination:	yes
Time display:	yes
Vibration-free weighing (Animal weighing program):	yes
Weighing with tolerance range:	yes

Environmental conditions

Maximum humidity:	95 %
Maximum operating temperature:	40 °C
Minimum ambient temperature:	-10 °C
Minimum humidity:	10 %

Power supply

Battery:	no battery
Charging time:	3 h
Input voltage:	100V-240V AC 50/60Hz 0,400 Amax
Mains adapter:	Mains adapter external
Mains adapter/adaptor included:	EURO US UK
Operating time (Backlight off):	43 h
Operating time (Backlight on):	26 h
Rechargeable battery:	Rchrg. battery optional - intern

Services (optional)

Adjustment at the location of installation:	961-250
DAkkS Certificate:	963-130
Verification:	965-230

Category

Brand:	KERN
Category:	Balances
Product Group:	Pallet scale

Packaging & shipping

Delivery:	48 h
Dimensions packaging (WxDxH):	1270 x 900 x 260 mm
Gross weight:	65 kg
Net weight:	44 kg
Shipping method:	Freight forwarder

Construction

Cable length:	5 m
Cable length of display device:	5 m
Dimensions of display device (WxDxH):	268 x 115 x 80 mm

KERN UID600K-1DM

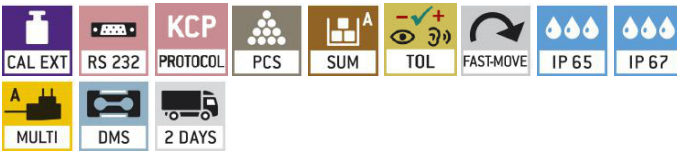


High-resolution dual-range pallet scale with calibration approval [M] and a large number of data interfaces

Dimensions of weighing plate (WxDxH):	1195 x 840 x 110 mm
Level indicator:	yes
Revolving screw feet:	yes
Wall mount:	yes
Weighing surface (WxD):	1195 x 840 mm

Piktogramme

STANDARD



OPTION



FACTORY



KERN UID600K-1M



High-resolution dual-range pallet scale with calibration approval [M] and a large number of data interfaces



Measuring system

Adjustment options:	External calibration
Eccentric loading at 1/3 [Max]:	1 kg
Linearity:	600 g
Load cell connection:	4-wire
Number of weighing ranges:	1
Readability [d]:	200 g
Repeatability:	200 g
Resolution:	3000
Stabilisation time under laboratory conditions:	4 s
Tare range:	-600 kg
Warm up time:	10 min
Weighing capacity [Max]:	600 kg
Weighing system:	Strain gauge
Weighing units:	kg tJ HJ g oz PCS lb

Display

Display digit height (large):	2,500 cm
Display digit height (small):	2,500 cm

Technical data about verification

Minimum load [Min]:	4 kg
Periodic Verification for Italy:	969-112
Verification approval conforming to 2014/31/EU:	yes
Verification by KERN possible:	yes
Verification class:	III
Verification value [e]:	200 g

Functions

Counting function:	yes
Data hold function:	yes
Percentage determination:	yes
Time display:	yes
Vibration-free weighing (Animal weighing program):	yes
Weighing with tolerance range:	yes

Environmental conditions

Maximum humidity:	95 %
Maximum operating temperature:	40 °C
Minimum ambient temperature:	-10 °C
Minimum humidity:	10 %

Power supply

Battery:	no battery
Charging time:	3 h
Input voltage:	100V-240V AC 50/60Hz 0,400 Amax
Mains adapter:	Mains adapter external
Mains adapter/adaptor included:	EURO US UK
Operating time (Backlight off):	43 h
Operating time (Backlight on):	26 h
Rechargeable battery:	Rchrg. battery optional - intern

Services (optional)

Adjustment at the location of installation:	961-250
DAkkS Certificate:	963-130
Verification:	965-230

Category

Brand:	KERN
Category:	Balances
Product Group:	Pallet scale

Packaging & shipping

Delivery:	48 h
Dimensions packaging (WxDxH):	1240 x 890 x 245 mm
Gross weight:	65 kg
Net weight:	44 kg
Shipping method:	Freight forwarder

Construction

Cable length:	5 m
Cable length of display device:	5 m
Dimensions of display device (WxDxH):	268 x 115 x 80 mm

KERN UID600K-1M

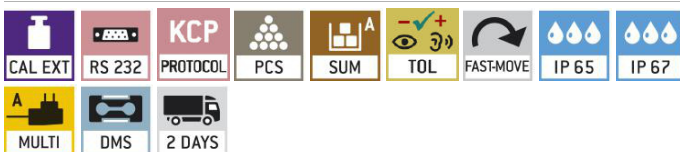


High-resolution dual-range pallet scale with calibration approval [M] and a large number of data interfaces

Dimensions of weighing plate (WxDxH):	1195 x 840 x 110 mm
Level indicator:	yes
Revolving screw feet:	yes
Wall mount:	yes
Weighing surface (WxD):	1195 x 840 mm

Piktogramme

STANDARD



OPTION



FACTORY

