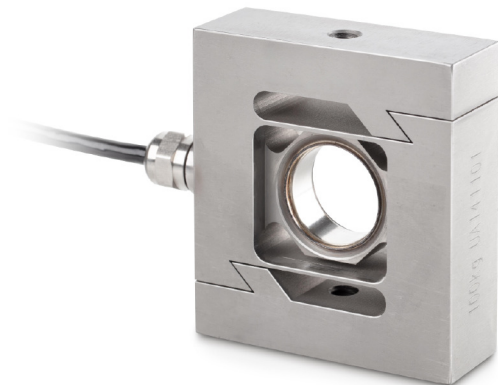


KERN CS100-3P2

S measuring cells and S load cells made from stainless steel



Construction

Cable length:	6 m
Dimensions (WxDxH):	92 x 86 x 50 mm

Measuring system

Combined Error:	0,023 %
Load cell connection:	4-wire
Nominal sensitivity:	2
OIML class:	C3
Resolution Load cell â Verifiable:	3000 e
Weighing capacity [Max]:	100 kg
Y value:	12000

Environmental conditions

Maximum operating temperature:	65 °C
Maximum operating temperature:	40 °C
Minimum ambient temperature:	-35 °C
Minimum operating temperature:	-10 °C

Services (optional)

DAkkS Calibration certificate (Pressure):	963-262V
DAkkS Calibration certificate (Tensile):	963-162V
DAkkS Calibration certificate (Tensile/Pressure):	963-362V

Category

Brand:	Sauter
--------	--------

Packaging & shipping

Delivery:	24 h
Dimensions packaging (WxDxH):	205 x 170 x 60 mm
Gross weight:	1,460 kg
Net weight:	1,360 kg
Shipping method:	Parcel service

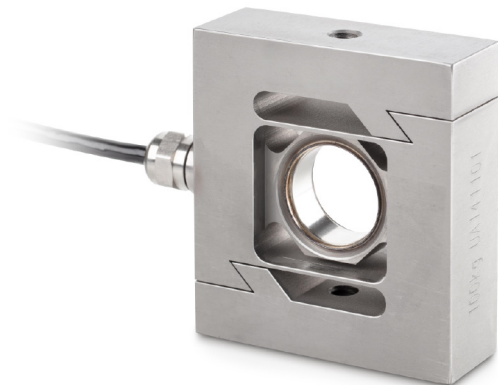
KERN CS1000-3P2

S measuring cells and S load cells made from stainless steel



Construction

Cable length:	6 m
Dimensions (WxDxH):	92 x 86 x 50 mm



Measuring system

Combined Error:	0,023 %
Load cell connection:	4-wire
Nominal sensitivity:	2
OIML class:	C3
Resolution Load cell â Verifiable:	3000 e
Weighing capacity [Max]:	1 t
Y value:	12000

Environmental conditions

Maximum operating temperature:	65 °C
Maximum operating temperature:	40 °C
Minimum ambient temperature:	-35 °C
Minimum operating temperature:	-10 °C

Services (optional)

Factory calibration certificate (Tensile):	961-164V
Factory calibration certificate (Tensile/Pressure):	961-364V

Category

Brand:	Sauter
--------	--------

Packaging & shipping

Delivery:	24 h
Dimensions packaging (WxDxH):	205 x 170 x 60 mm
Gross weight:	1,750 kg
Net weight:	1,644 kg
Shipping method:	Parcel service

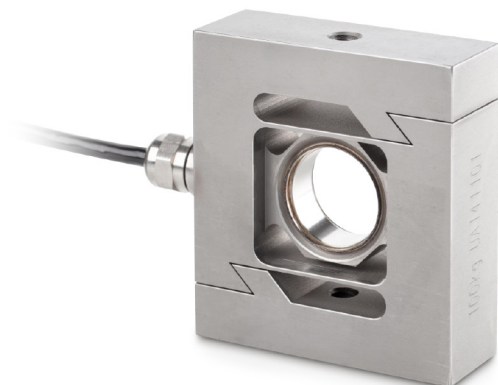
KERN CS2000-3P2

S measuring cells and S load cells made from stainless steel



Construction

Cable length:	6 m
Dimensions (WxDxH):	92 x 86 x 50 mm



Measuring system

Combined Error:	0,023 %
Load cell connection:	4-wire
Nominal sensitivity:	2
OIML class:	C3
Resolution Load cell â Verifiable:	3000 e
Weighing capacity [Max]:	2 t
Y value:	12000

Environmental conditions

Maximum operating temperature:	65 °C
Maximum operating temperature:	40 °C
Minimum ambient temperature:	-35 °C
Minimum operating temperature:	-10 °C

Services (optional)

Factory calibration certificate (Tensile):	961-164V
Factory calibration certificate (Tensile/Pressure):	961-364V

Category

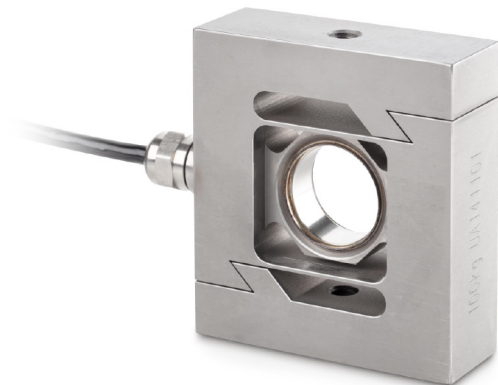
Brand:	Sauter
--------	--------

Packaging & shipping

Delivery:	24 h
Dimensions packaging (WxDxH):	205 x 170 x 60 mm
Gross weight:	1,703 kg
Net weight:	1,597 kg
Shipping method:	Parcel service

KERN CS250-3P2

S measuring cells and S load cells made from stainless steel



Construction

Cable length:	6 m
Dimensions (WxDxH):	92 x 86 x 50 mm

Measuring system

Combined Error:	0,023 %
Load cell connection:	4-wire
Nominal sensitivity:	2
OIML class:	C3
Resolution Load cell â Verifiable:	3000 e
Weighing capacity [Max]:	250 kg
Y value:	12000

Environmental conditions

Maximum operating temperature:	65 °C
Maximum operating temperature:	40 °C
Minimum ambient temperature:	-35 °C
Minimum operating temperature:	-10 °C

Services (optional)

DAkkS Calibration certificate (Pressure):	963-263V
DAkkS Calibration certificate (Tensile):	963-163V
DAkkS Calibration certificate (Tensile/Pressure):	963-363V

Category

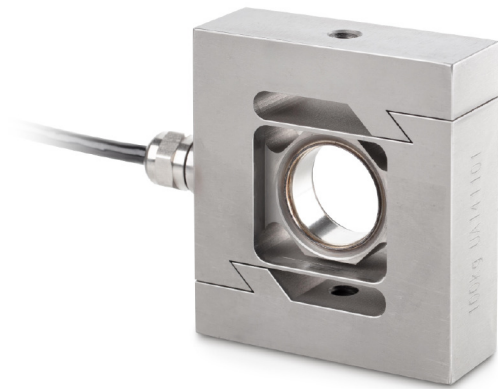
Brand:	Sauter
--------	--------

Packaging & shipping

Delivery:	24 h
Dimensions packaging (WxDxH):	200 x 180 x 55 mm
Gross weight:	1,072 kg
Net weight:	960 g
Shipping method:	Parcel service

KERN CS50-3P2

S measuring cells and S load cells made from stainless steel



Construction

Cable length:	6 m
Dimensions (WxDxH):	92 x 86 x 50 mm

Measuring system

Combined Error:	0,023 %
Load cell connection:	4-wire
Nominal sensitivity:	2
OIML class:	C3
Resolution Load cell â Verifiable:	3000 e
Weighing capacity [Max]:	50 kg
Y value:	12000

Environmental conditions

Maximum operating temperature:	65 °C
Maximum operating temperature:	40 °C
Minimum ambient temperature:	-35 °C
Minimum operating temperature:	-10 °C

Services (optional)

DAkkS Calibration certificate (Pressure):	963-261V
DAkkS Calibration certificate (Tensile):	963-161V
DAkkS Calibration certificate (Tensile/Pressure):	963-361V

Category

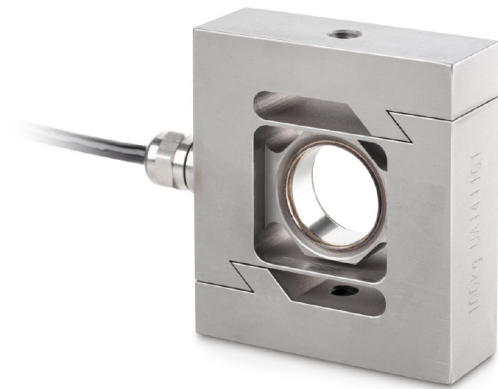
Brand:	Sauter
--------	--------

Packaging & shipping

Delivery:	24 h
Dimensions packaging (WxDxH):	205 x 170 x 60 mm
Gross weight:	1,460 kg
Net weight:	1,360 kg
Shipping method:	Parcel service

KERN CS500-3P2

S measuring cells and S load cells made from stainless steel



Construction

Cable length:	6 m
Dimensions (WxDxH):	92 x 86 x 50 mm

Measuring system

Combined Error:	0,023 %
Load cell connection:	4-wire
Nominal sensitivity:	2
OIML class:	C3
Resolution Load cell â Verifiable:	3000 e
Weighing capacity [Max]:	500 kg
Y value:	12000

Environmental conditions

Maximum operating temperature:	65 °C
Maximum operating temperature:	40 °C
Minimum ambient temperature:	-35 °C
Minimum operating temperature:	-10 °C

Services (optional)

DAkkS Calibration certificate (Pressure):	963-263V
DAkkS Calibration certificate (Tensile):	963-163V
DAkkS Calibration certificate (Tensile/Pressure):	963-363V

Category

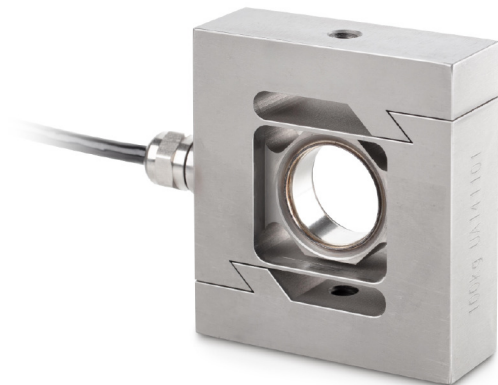
Brand:	Sauter
--------	--------

Packaging & shipping

Delivery:	24 h
Dimensions packaging (WxDxH):	205 x 170 x 60 mm
Gross weight:	1,460 kg
Net weight:	1,360 kg
Shipping method:	Parcel service

KERN CS5000-3P2

S measuring cells and S load cells made from stainless steel



Construction

Cable length:	6 m
Dimensions (WxDxH):	92 x 86 x 50 mm

Measuring system

Combined Error:	0,023 %
Load cell connection:	4-wire
Nominal sensitivity:	2
OIML class:	C3
Resolution Load cell â Verifiable:	3000 e
Weighing capacity [Max]:	5 t
Y value:	12000

Environmental conditions

Maximum operating temperature:	65 °C
Maximum operating temperature:	40 °C
Minimum ambient temperature:	-35 °C
Minimum operating temperature:	-10 °C

Services (optional)

Factory calibration certificate (Pressure):	961-265V
Factory calibration certificate (Tensile):	961-165V
Factory calibration certificate (Tensile/Pressure):	961-365V

Category

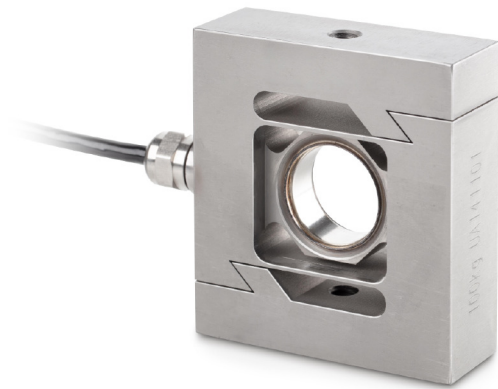
Brand:	Sauter
--------	--------

Packaging & shipping

Delivery:	24 h
Dimensions packaging (WxDxH):	215 x 220 x 150 mm
Gross weight:	2,964 kg
Net weight:	2,375 kg
Shipping method:	Parcel service

KERN CS7500-3P2

S measuring cells and S load cells made from stainless steel



Construction

Cable length:	6 m
Dimensions (WxDxH):	92 x 86 x 50 mm

Measuring system

Combined Error:	0,023 %
Load cell connection:	4-wire
Nominal sensitivity:	2
OIML class:	C3
Resolution Load cell â Verifiable:	3000 e
Weighing capacity [Max]:	7,500 t
Y value:	12000

Environmental conditions

Maximum operating temperature:	65 °C
Maximum operating temperature:	40 °C
Minimum ambient temperature:	-35 °C
Minimum operating temperature:	-10 °C

Services (optional)

Factory calibration certificate (Pressure):	961-266V
Factory calibration certificate (Tensile):	961-166V
Factory calibration certificate (Tensile/Pressure):	961-366V

Category

Brand:	Sauter
--------	--------

Packaging & shipping

Delivery:	24 h
Dimensions packaging (WxDxH):	205 x 170 x 60 mm
Gross weight:	1,460 kg
Net weight:	1,360 kg
Shipping method:	Parcel service