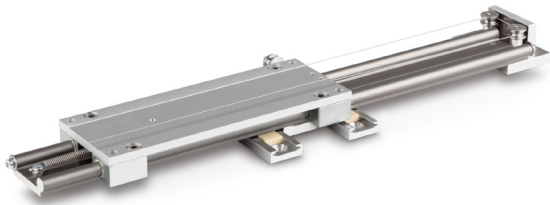


KERN TPE-N

Universal attachment for test benches for 90 degree peel tests



Category

Brand:	Sauter
Category:	Test stands

Packaging & shipping

Delivery:	24 h
Dimensions packaging (WxDxH):	580 x 460 x 270 mm
Gross weight:	7 kg
Net weight:	4,500 kg
Shipping method:	Parcel service

Construction

Casing material:	Metal lacquered
Dimensions (WxDxH):	215 x 420 x 50 mm
Dimensions housing (WxDxH):	215 x 420 x 50 mm
Maximum generated force:	500 N
Maximum test object length:	20 cm
Overall dimensions mounted (WxDxH):	215 x 420 x 50 mm