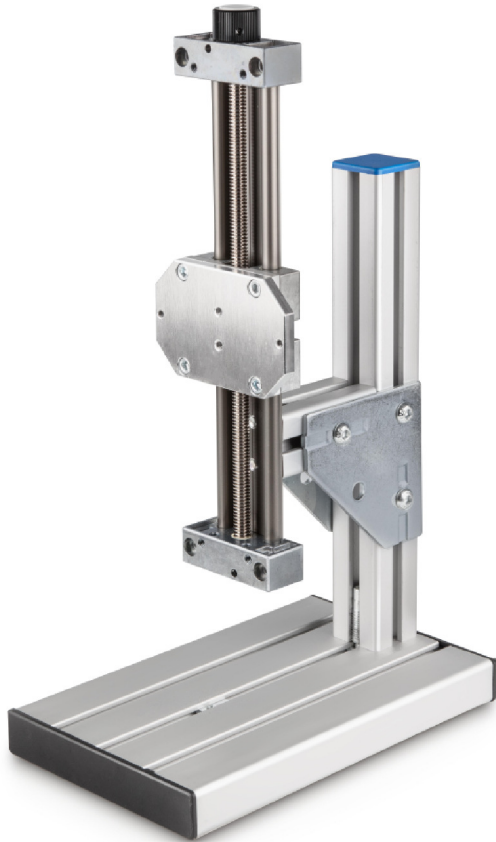


# KERN TVL-XS

Manual test bench for precise compressive force measurement in the range up to 100 N



## Category

Brand:	Sauter
Category:	Test stands
Product Group:	Manual test stand

## Packaging & shipping

Delivery:	24 h
Dimensions packaging (WxDxH):	400 x 260 x 220 mm
Gross weight:	5 kg
Net weight:	4,500 kg
Shipping method:	Parcel service

## Construction

Casing material:	aluminium
Dimensions (WxDxH):	300 x 250 x 160 mm
Dimensions housing (WxDxH):	300 x 250 x 160 mm
Maximum generated force:	100 N
Maximum travelling distance:	20 cm
Overall dimensions mounted (WxDxH):	300 x 250 x 160 mm