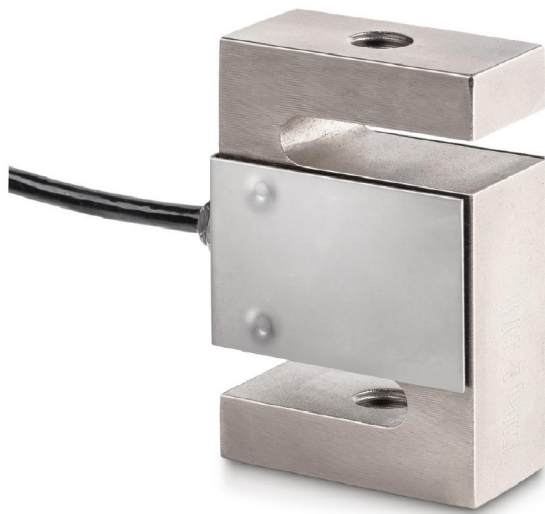


# KERN CS100-3P1

4 wire  $\hat{a}$ S $\hat{a}$  measuring cells for force and mass measurement



## Packaging & shipping

Delivery:	24 h
Dimensions packaging (WxDxH):	185 x 155 x 60 mm
Gross weight:	685 g
Net weight:	580 g
Shipping method:	Parcel service

## Construction

Cable length:	3 m
Dimensions (WxDxH):	50,8 x 76,2 x 20,8 mm

## Piktogramme

STANDARD



## Measuring system

Combined Error:	0,020 %
Load cell connection:	4-wire
Nominal sensitivity:	2
OIML class:	C3
Resolution Load cell $\hat{a}$ Verifiable:	3000 e
Weighing capacity [Max]:	100 kg
Y value:	10000

## Environmental conditions

Maximum operating temperature:	65 °C
Maximum operating temperature:	40 °C
Minimum ambient temperature:	-35 °C
Minimum operating temperature:	-10 °C

## Services (optional)

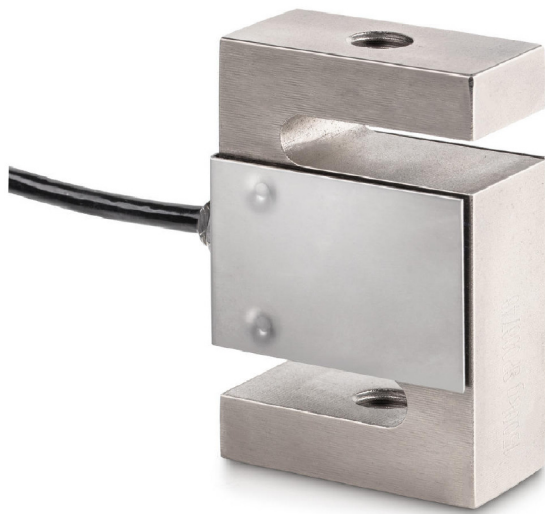
DAkkS Calibration certificate (Pressure):	963-262V
DAkkS Calibration certificate (Tensile):	963-162V
DAkkS Calibration certificate (Tensile/Pressure):	963-362V

## Category

Brand:	Sauter
--------	--------

# KERN CS1000-3P1

4 wire  $\hat{a}$  measuring cells for force and mass measurement



## Packaging & shipping

Delivery:	24 h
Dimensions packaging (WxDxH):	185 x 155 x 60 mm
Gross weight:	760 g
Net weight:	658 g
Shipping method:	Parcel service

## Construction

Cable length:	3 m
Dimensions (WxDxH):	50,8 x 76,2 x 27,2 mm

## Piktogramme

STANDARD



## Measuring system

Combined Error:	0,020 %
Load cell connection:	4-wire
Nominal sensitivity:	2
OIML class:	C3
Resolution Load cell $\hat{a}$ Verifiable:	3000 e
Weighing capacity [Max]:	1 t
Y value:	10000

## Environmental conditions

Maximum operating temperature:	65 °C
Maximum operating temperature:	40 °C
Minimum ambient temperature:	-35 °C
Minimum operating temperature:	-10 °C

## Services (optional)

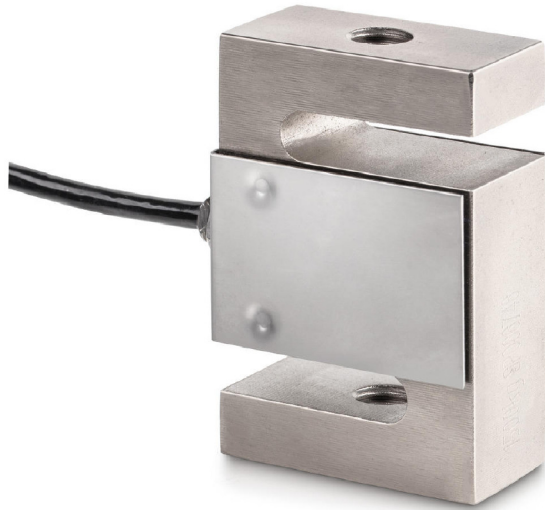
Factory calibration certificate (Tensile):	961-164V
Factory calibration certificate (Tensile/Pressure):	961-364V

## Category

Brand:	Sauter
--------	--------

# KERN CS10000-3P1

4 wire  $\hat{a}$ S $\hat{a}$  measuring cells for force and mass measurement



## Packaging & shipping

Delivery:	24 h
Dimensions packaging (WxDxH):	320 x 320 x 160 mm
Gross weight:	8,520 kg
Net weight:	6,720 kg
Shipping method:	Parcel service

## Construction

Cable length:	6 m
Dimensions (WxDxH):	125 x 175 x 50 mm

## Piktogramme

STANDARD



## Measuring system

Combined Error:	0,020 %
Load cell connection:	4-wire
Nominal sensitivity:	2
OIML class:	C3
Resolution Load cell $\hat{a}$ Verifiable:	3000 e
Weighing capacity [Max]:	10 t
Y value:	10000

## Environmental conditions

Maximum operating temperature:	65 °C
Maximum operating temperature:	40 °C
Minimum ambient temperature:	-35 °C
Minimum operating temperature:	-10 °C

## Services (optional)

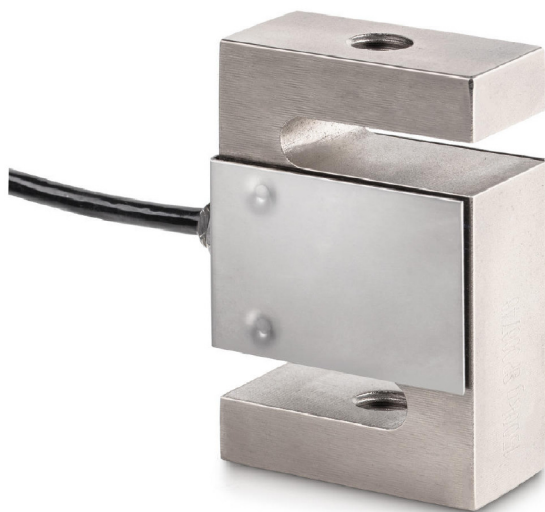
Factory calibration certificate (Pressure):	961-266V
Factory calibration certificate (Tensile):	961-166V
Factory calibration certificate (Tensile/Pressure):	961-366V

## Category

Brand:	Sauter
--------	--------

# KERN CS150-3P1

4 wire  $\hat{a}$ S $\hat{a}$  measuring cells for force and mass measurement



## Packaging & shipping

Delivery:	24 h
Dimensions packaging (WxDxH):	185 x 155 x 60 mm
Gross weight:	615 g
Net weight:	518 g
Shipping method:	Parcel service

## Construction

Cable length:	3 m
Dimensions (WxDxH):	50,8 x 76,2 x 20,8 mm

## Piktogramme

STANDARD



## Measuring system

Combined Error:	0,020 %
Load cell connection:	4-wire
Nominal sensitivity:	2
OIML class:	C3
Resolution Load cell $\hat{a}$ Verifiable:	3000 e
Weighing capacity [Max]:	150 kg
Y value:	10000

## Environmental conditions

Maximum operating temperature:	65 °C
Maximum operating temperature:	40 °C
Minimum ambient temperature:	-35 °C
Minimum operating temperature:	-10 °C

## Services (optional)

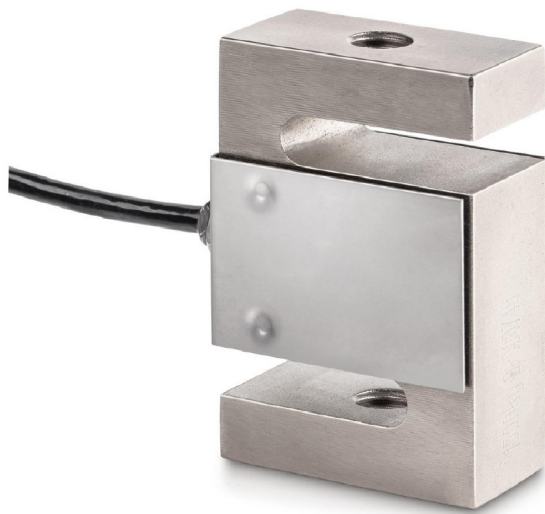
DAkkS Calibration certificate (Pressure):	963-262V
DAkkS Calibration certificate (Tensile):	963-162V
DAkkS Calibration certificate (Tensile/Pressure):	963-362V

## Category

Brand:	Sauter
--------	--------

# KERN CS1500-3P1

4 wire 4-wire measuring cells for force and mass measurement



## Packaging & shipping

Delivery:	24 h
Dimensions packaging (WxDxH):	185 x 155 x 60 mm
Gross weight:	752 g
Net weight:	658 g
Shipping method:	Parcel service

## Construction

Cable length:	3 m
Dimensions (WxDxH):	50,8 x 76,2 x 27,2 mm

## Piktogramme

STANDARD



## Measuring system

Combined Error:	0,020 %
Load cell connection:	4-wire
Nominal sensitivity:	2
OIML class:	C3
Resolution Load cell 4 Verifiable:	3000 e
Weighing capacity [Max]:	1,500 t
Y value:	10000

## Environmental conditions

Maximum operating temperature:	65 °C
Maximum operating temperature:	40 °C
Minimum ambient temperature:	-35 °C
Minimum operating temperature:	-10 °C

## Services (optional)

Factory calibration certificate (Tensile):	961-164V
Factory calibration certificate (Tensile/Pressure):	961-364V

## Category

Brand:	Sauter
--------	--------

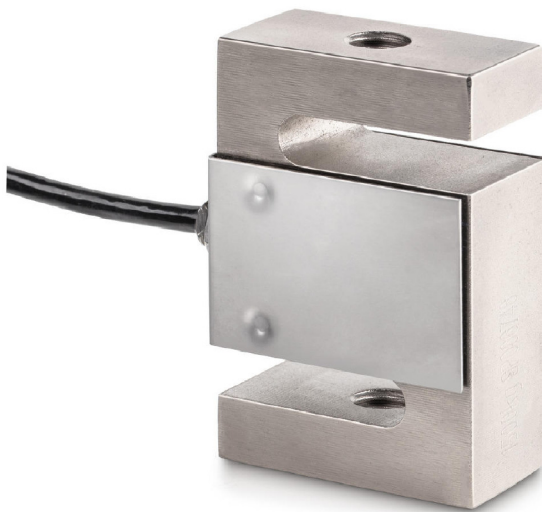
# KERN CS15000-3P1

4 wire 4-wire measuring cells for force and mass measurement

# KERN®

## Piktogramme

STANDARD



### Measuring system

Combined Error:	0,020 %
Load cell connection:	4-wire
Nominal sensitivity:	2
OIML class:	C3
Resolution Load cell 4 Verifiable:	3000 e
Weighing capacity [Max]:	15 t
Y value:	10000

### Environmental conditions

Maximum operating temperature:	65 °C
Maximum operating temperature:	40 °C
Minimum ambient temperature:	-35 °C
Minimum operating temperature:	-10 °C

### Category

Brand:	Sauter
--------	--------

### Packaging & shipping

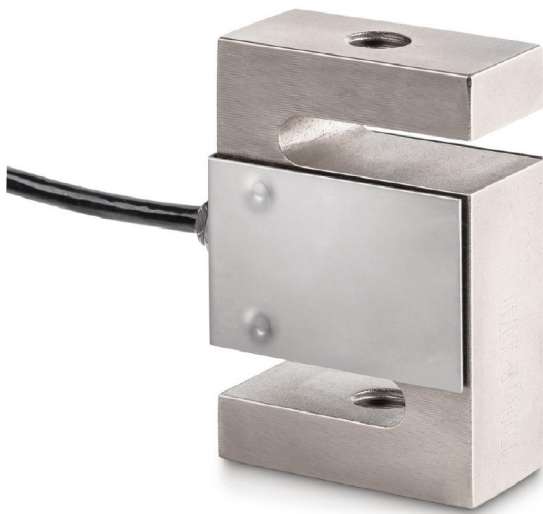
Delivery:	96 h
Dimensions packaging (WxDxH):	320 x 320 x 160 mm
Gross weight:	13,300 kg
Net weight:	11,900 kg
Shipping method:	Parcel service

### Construction

Cable length:	6 m
Dimensions (WxDxH):	160 x 200 x 60 mm

# KERN CS2000-3P1

4 wire 4-wire measuring cells for force and mass measurement



## Packaging & shipping

Delivery:	24 h
Dimensions packaging (WxDxH):	200 x 170 x 60 mm
Gross weight:	1,410 kg
Net weight:	1,300 kg
Shipping method:	Parcel service

## Construction

Cable length:	6 m
Dimensions (WxDxH):	76,2 x 101,6 x 27,2 mm

## Piktogramme

STANDARD



## Measuring system

Combined Error:	0,020 %
Load cell connection:	4-wire
Nominal sensitivity:	2
OIML class:	C3
Resolution Load cell 4 Verifiable:	3000 e
Weighing capacity [Max]:	2 t
Y value:	10000

## Environmental conditions

Maximum operating temperature:	65 °C
Maximum operating temperature:	40 °C
Minimum ambient temperature:	-35 °C
Minimum operating temperature:	-10 °C

## Services (optional)

Factory calibration certificate (Tensile):	961-164V
Factory calibration certificate (Tensile/Pressure):	961-364V

## Category

Brand:	Sauter
--------	--------

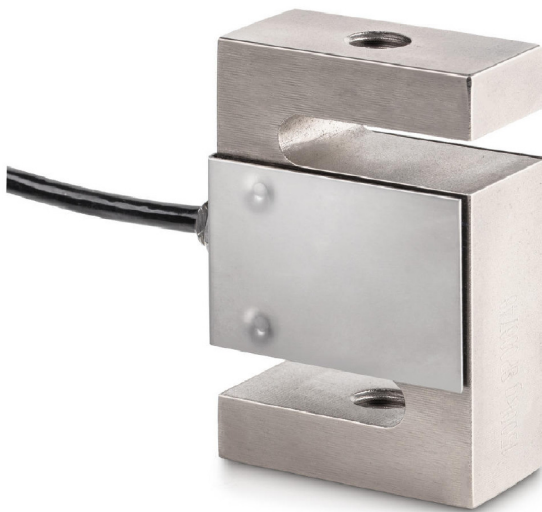
# KERN CS20000-3P1

4 wire 4-wire measuring cells for force and mass measurement

# KERN®

## Piktogramme

STANDARD



## Measuring system

Combined Error:	0,020 %
Load cell connection:	4-wire
Nominal sensitivity:	2
OIML class:	C3
Resolution Load cell 4 Verifiable:	3000 e
Weighing capacity [Max]:	20 t
Y value:	10000

## Environmental conditions

Maximum operating temperature:	65 °C
Maximum operating temperature:	40 °C
Minimum ambient temperature:	-35 °C
Minimum operating temperature:	-10 °C

## Category

Brand:	Sauter
--------	--------

## Packaging & shipping

Delivery:	2712 h
Dimensions packaging (WxDxH):	320 x 320 x 160 mm
Gross weight:	13,430 kg
Net weight:	11,880 kg
Shipping method:	Parcel service

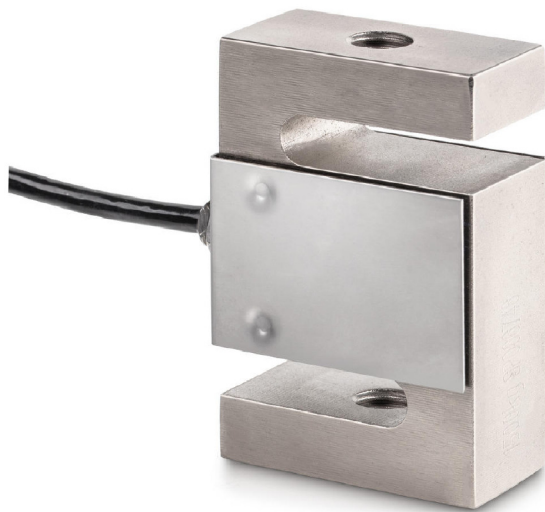
## Construction

Cable length:	6 m
Dimensions (WxDxH):	160 x 200 x 60 mm



# KERN CS25-3P1

4 wire  $\hat{a}$ S $\hat{a}$  measuring cells for force and mass measurement



## Packaging & shipping

Delivery:	24 h
Dimensions packaging (WxDxH):	185 x 155 x 60 mm
Gross weight:	474 g
Net weight:	375 g
Shipping method:	Parcel service

## Construction

Cable length:	3 m
Dimensions (WxDxH):	50,8 x 76,2 x 14,5 mm

## Piktogramme

STANDARD



## Measuring system

Combined Error:	0,020 %
Load cell connection:	4-wire
Nominal sensitivity:	2
OIML class:	C3
Resolution Load cell $\hat{a}$ Verifiable:	3000 e
Weighing capacity [Max]:	25 kg
Y value:	10000

## Environmental conditions

Maximum operating temperature:	65 $^{\circ}$ C
Maximum operating temperature:	40 $^{\circ}$ C
Minimum ambient temperature:	-35 $^{\circ}$ C
Minimum operating temperature:	-10 $^{\circ}$ C

## Services (optional)

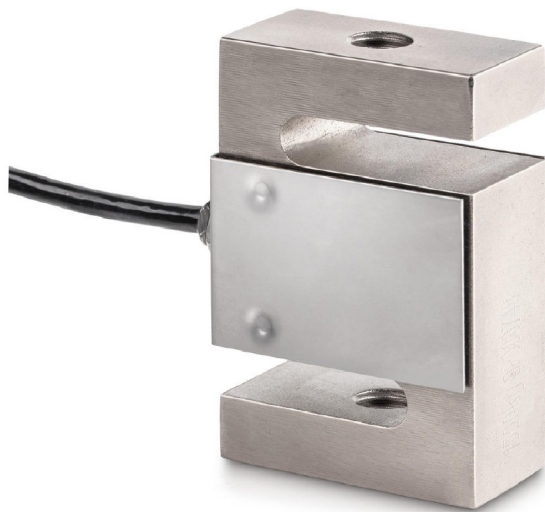
DAkkS Calibration certificate (Pressure):	963-261V
DAkkS Calibration certificate (Tensile):	963-161V
DAkkS Calibration certificate (Tensile/Pressure):	963-361V

## Category

Brand:	Sauter
--------	--------

# KERN CS250-3P1

4 wire  $\hat{a}$ S $\hat{a}$  measuring cells for force and mass measurement



## Packaging & shipping

Delivery:	24 h
Dimensions packaging (WxDxH):	185 x 155 x 60 mm
Gross weight:	610 g
Net weight:	512 g
Shipping method:	Parcel service

## Construction

Cable length:	3 m
Dimensions (WxDxH):	50,8 x 76,2 x 20,8 mm

## Piktogramme

STANDARD



## Measuring system

Combined Error:	0,020 %
Load cell connection:	4-wire
Nominal sensitivity:	2
OIML class:	C3
Resolution Load cell $\hat{a}$ Verifiable:	3000 e
Weighing capacity [Max]:	250 kg
Y value:	10000

## Environmental conditions

Maximum operating temperature:	65 °C
Maximum operating temperature:	40 °C
Minimum ambient temperature:	-35 °C
Minimum operating temperature:	-10 °C

## Services (optional)

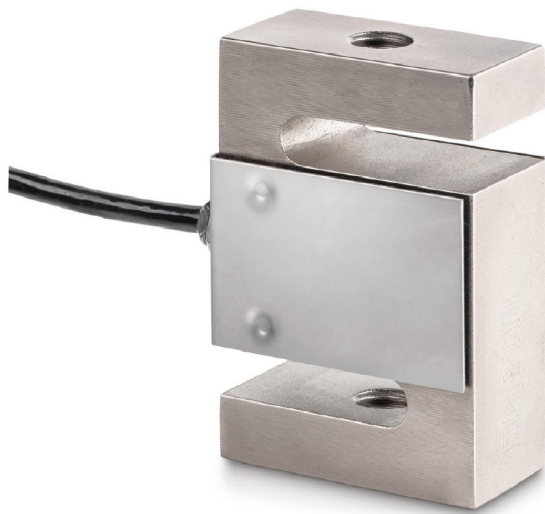
DAkkS Calibration certificate (Pressure):	963-263V
DAkkS Calibration certificate (Tensile):	963-163V
DAkkS Calibration certificate (Tensile/Pressure):	963-363V

## Category

Brand:	Sauter
--------	--------

# KERN CS2500-3P1

4 wire S measuring cells for force and mass measurement



## Packaging & shipping

Delivery:	24 h
Dimensions packaging (WxDxH):	205 x 170 x 60 mm
Gross weight:	1,399 kg
Net weight:	1,292 kg
Shipping method:	Parcel service

## Construction

Cable length:	6 m
Dimensions (WxDxH):	76,2 x 101,6 x 27,2 mm

## Piktogramme

### STANDARD



## Measuring system

Combined Error:	0,020 %
Load cell connection:	4-wire
Nominal sensitivity:	2
OIML class:	C3
Resolution Load cell  Verifiable:	3000 e
Weighing capacity [Max]:	2,500 t
Y value:	10000

## Environmental conditions

Maximum operating temperature:	65 C
Maximum operating temperature:	40 C
Minimum ambient temperature:	-35 C
Minimum operating temperature:	-10 C

## Services (optional)

Factory calibration certificate (Pressure):	961-265V
Factory calibration certificate (Tensile):	961-165V
Factory calibration certificate (Tensile/Pressure):	961-365V

## Category

Brand:	Sauter
--------	--------

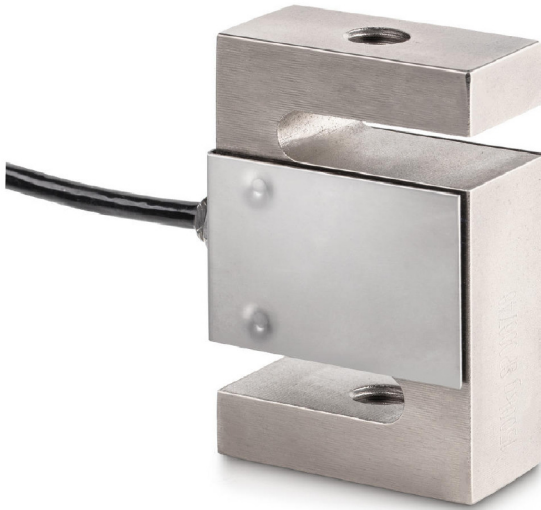
# KERN CS30000-3P1

4 wire 4-wire measuring cells for force and mass measurement

**KERN**<sup>®</sup>

## Piktogramme

STANDARD



### Measuring system

Combined Error:	0,020 %
Load cell connection:	4-wire
Nominal sensitivity:	2
OIML class:	C3
Resolution Load cell 4 Verifiable:	3000 e
Weighing capacity [Max]:	30 t
Y value:	10000

### Environmental conditions

Maximum operating temperature:	65 °C
Maximum operating temperature:	40 °C
Minimum ambient temperature:	-35 °C
Minimum operating temperature:	-10 °C

### Category

Brand:	Sauter
--------	--------

### Packaging & shipping

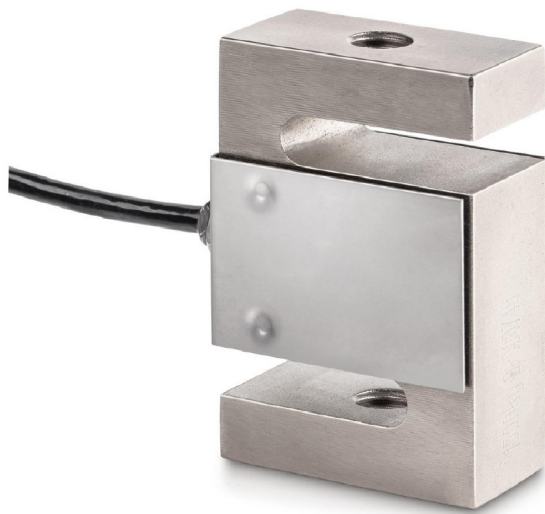
Delivery:	2712 h
Dimensions packaging (WxDxH):	600 x 600 x 200 mm
Gross weight:	13 kg
Net weight:	12 kg
Shipping method:	Parcel service

### Construction

Cable length:	6 m
Dimensions (WxDxH):	190 x 230 x 80 mm

# KERN CS50-3P1

4 wire 4-wire measuring cells for force and mass measurement



## Construction

Cable length:	3 m
Dimensions (WxDxH):	50,8 x 76,2 x 14,5 mm

## Piktogramme

### STANDARD



## Measuring system

Combined Error:	0,020 %
Load cell connection:	4-wire
Nominal sensitivity:	2
OIML class:	C3
Resolution Load cell 4 Verifiable:	3000 e
Weighing capacity [Max]:	50 kg
Y value:	10000

## Services (optional)

DAkkS Calibration certificate (Pressure):	963-261V
DAkkS Calibration certificate (Tensile):	963-161V
DAkkS Calibration certificate (Tensile/Pressure):	963-361V

## Category

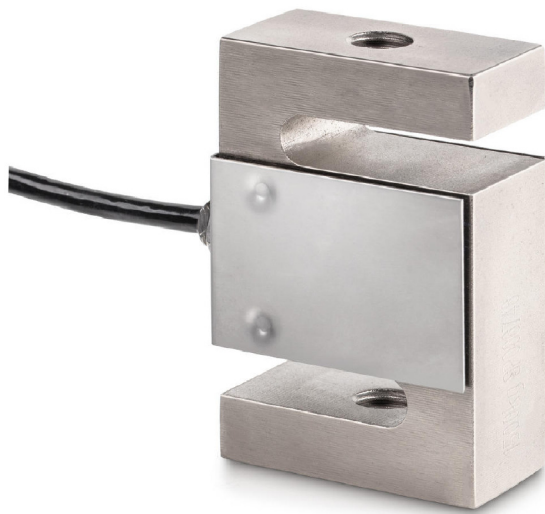
Brand:	Sauter
--------	--------

## Packaging & shipping

Delivery:	24 h
Dimensions packaging (WxDxH):	185 x 155 x 60 mm
Gross weight:	685 g
Net weight:	580 g
Shipping method:	Parcel service

# KERN CS500-3P1

4 wire  $\hat{a}$ S $\hat{a}$  measuring cells for force and mass measurement



## Packaging & shipping

Delivery:	24 h
Dimensions packaging (WxDxH):	185 x 155 x 60 mm
Gross weight:	608 g
Net weight:	511 g
Shipping method:	Parcel service

## Construction

Cable length:	3 m
Dimensions (WxDxH):	50,8 x 76,2 x 20,8 mm

## Piktogramme

STANDARD



## Measuring system

Combined Error:	0,020 %
Load cell connection:	4-wire
Nominal sensitivity:	2
OIML class:	C3
Resolution Load cell $\hat{a}$ Verifiable:	3000 e
Weighing capacity [Max]:	500 kg
Y value:	10000

## Environmental conditions

Maximum operating temperature:	65 °C
Maximum operating temperature:	40 °C
Minimum ambient temperature:	-35 °C
Minimum operating temperature:	-10 °C

## Services (optional)

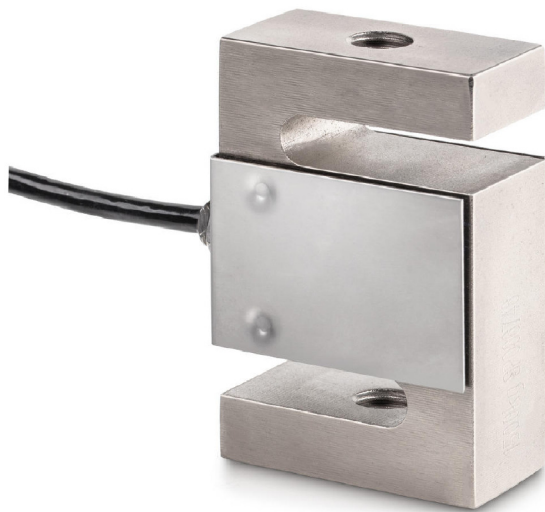
DAkkS Calibration certificate (Pressure):	963-263V
DAkkS Calibration certificate (Tensile):	963-163V
DAkkS Calibration certificate (Tensile/Pressure):	963-363V

## Category

Brand:	Sauter
--------	--------

# KERN CS5000-3P1

4 wire 4-wire measuring cells for force and mass measurement



## Packaging & shipping

Delivery:	24 h
Dimensions packaging (WxDxH):	205 x 170 x 60 mm
Gross weight:	1,460 kg
Net weight:	1,360 kg
Shipping method:	Parcel service

## Construction

Cable length:	6 m
Dimensions (WxDxH):	76,2 x 101,6 x 27,2 mm

## Piktogramme

STANDARD



## Measuring system

Combined Error:	0,020 %
Load cell connection:	4-wire
Nominal sensitivity:	2
OIML class:	C3
Resolution Load cell 4 Verifiable:	3000 e
Weighing capacity [Max]:	5 t
Y value:	10000

## Environmental conditions

Maximum operating temperature:	65 °C
Maximum operating temperature:	40 °C
Minimum ambient temperature:	-35 °C
Minimum operating temperature:	-10 °C

## Services (optional)

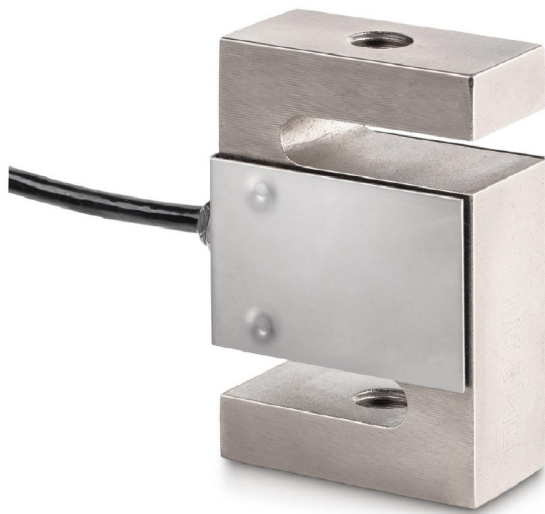
Factory calibration certificate (Pressure):	961-265V
Factory calibration certificate (Tensile):	961-165V
Factory calibration certificate (Tensile/Pressure):	961-365V

## Category

Brand:	Sauter
--------	--------

# KERN CS600-3P1

4 wire 4-wire measuring cells for force and mass measurement



## Packaging & shipping

Delivery:	24 h
Dimensions packaging (WxDxH):	185 x 155 x 60 mm
Gross weight:	615 g
Net weight:	518 g
Shipping method:	Parcel service

## Construction

Cable length:	3 m
Dimensions (WxDxH):	50,8 x 76,2 x 20,8 mm

## Piktogramme

STANDARD



## Measuring system

Combined Error:	0,020 %
Load cell connection:	4-wire
Nominal sensitivity:	2
OIML class:	C3
Resolution Load cell 4 Verifiable:	3000 e
Weighing capacity [Max]:	600 kg
Y value:	10000

## Environmental conditions

Maximum operating temperature:	65 °C
Maximum operating temperature:	40 °C
Minimum ambient temperature:	-35 °C
Minimum operating temperature:	-10 °C

## Services (optional)

Factory calibration certificate (Tensile):	961-164V
Factory calibration certificate (Tensile/Pressure):	961-364V

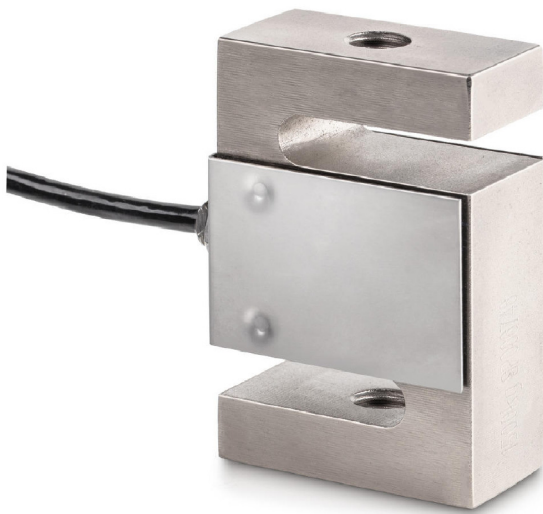
## Category

Brand:	Sauter
--------	--------



# KERN CS750-3P1

4 wire 4-wire measuring cells for force and mass measurement



## Packaging & shipping

Delivery:	24 h
Dimensions packaging (WxDxH):	185 x 155 x 60 mm
Gross weight:	617 g
Net weight:	520 g
Shipping method:	Parcel service

## Construction

Cable length:	3 m
Dimensions (WxDxH):	50,8 x 76,2 x 20,8 mm

## Piktogramme

STANDARD



## Measuring system

Combined Error:	0,020 %
Load cell connection:	4-wire
Nominal sensitivity:	2
OIML class:	C3
Resolution Load cell 4 Verifiable:	3000 e
Weighing capacity [Max]:	750 kg
Y value:	10000

## Environmental conditions

Maximum operating temperature:	65 °C
Maximum operating temperature:	40 °C
Minimum ambient temperature:	-35 °C
Minimum operating temperature:	-10 °C

## Services (optional)

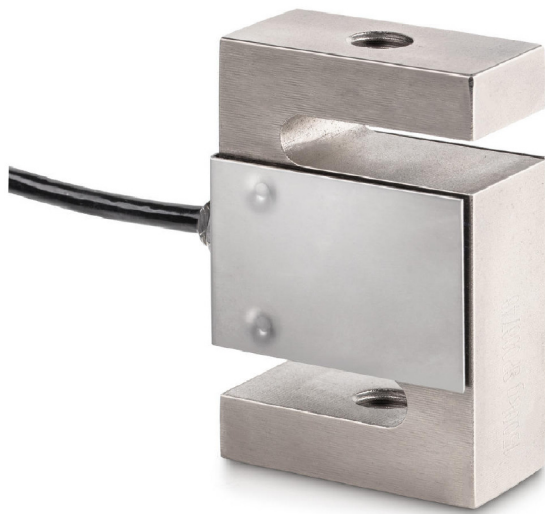
Factory calibration certificate (Tensile):	961-164V
Factory calibration certificate (Tensile/Pressure):	961-364V

## Category

Brand:	Sauter
--------	--------

# KERN CS7500-3P1

4 wire  $\hat{a}$ S $\hat{a}$  measuring cells for force and mass measurement



## Packaging & shipping

Delivery:	24 h
Dimensions packaging (WxDxH):	320 x 320 x 160 mm
Gross weight:	8,020 kg
Net weight:	6,680 kg
Shipping method:	Parcel service

## Construction

Cable length:	6 m
Dimensions (WxDxH):	125 x 175 x 50 mm

## Piktogramme

STANDARD



## Measuring system

Combined Error:	0,020 %
Load cell connection:	4-wire
Nominal sensitivity:	2
OIML class:	C3
Resolution Load cell $\hat{a}$ Verifiable:	3000 e
Weighing capacity [Max]:	7,500 t
Y value:	10000

## Environmental conditions

Maximum operating temperature:	65 °C
Maximum operating temperature:	40 °C
Minimum ambient temperature:	-35 °C
Minimum operating temperature:	-10 °C

## Services (optional)

Factory calibration certificate (Pressure):	961-266V
Factory calibration certificate (Tensile):	961-166V
Factory calibration certificate (Tensile/Pressure):	961-366V

## Category

Brand:	Sauter
--------	--------