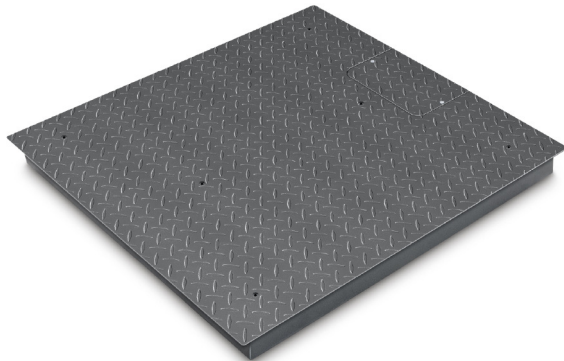


KERN KFP 1500V20M

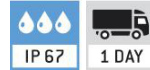
Weighing bridge made of non-slip steel chequer plate, lacquered, welded with IP67

KERN®



Piktogramme

STANDARD



FACTORY



Measuring system

| | |
|--------------------------|---------|
| Load cell connection: | 6-wire |
| Readability [d]: | 500 g |
| Weighing capacity [Max]: | 1,500 t |

Technical data about verification

| | |
|--------------------------------|-------|
| Minimum load [Min]: | 10 kg |
| Verification by KERN possible: | yes |
| Verification value [e]: | 500 g |

Services (optional)

| | |
|--------------------|---------|
| DAkkS Certificate: | 963-130 |
| Verification: | 965-230 |

Category

| | |
|----------------|-----------------|
| Brand: | KERN |
| Category: | Platforms |
| Product Group: | Weighing bridge |

Packaging & shipping

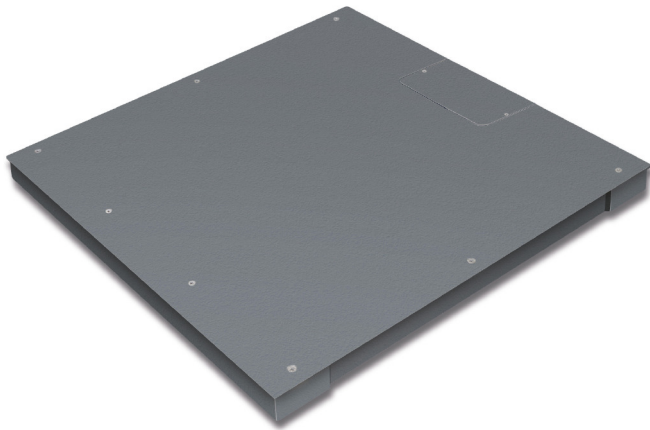
| | |
|-------------------------------|----------------------|
| Delivery: | 48 h |
| Dimensions packaging (WxDxH): | 1250 x 1525 x 325 mm |
| Gross weight: | 184 kg |
| Net weight: | 134 kg |
| Shipping method: | Freight forwarder |

Construction

| | |
|---------------------------------------|---------------------|
| Cable length: | 5 m |
| Dimensions of weighing plate (WxDxH): | 1500 x 1250 x 80 mm |
| Material weighing plate: | stainless steel |
| Revolving screw feet: | yes |
| Weighing surface (WxD): | 1500 x 1250 mm |

KERN KFP 1500V20NM

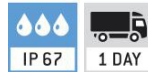
Weighing bridge, screwed, lacquered with IP67



| | |
|--------------------------|-----------------|
| Material weighing plate: | Steel lacquered |
| Revolving screw feet: | yes |
| Weighing surface (WxD): | 1500 x 1250 mm |

Piktogramme

STANDARD



FACTORY



Measuring system

| | |
|--------------------------|---------|
| Readability [d]: | 500 g |
| Weighing capacity [Max]: | 1,500 t |

Technical data about verification

| | |
|----------------------------------|---------|
| Minimum load [Min]: | 10 kg |
| Periodic Verification for Italy: | 969-112 |
| Verification by KERN possible: | yes |
| Verification class: | III |
| Verification value [e]: | 500 g |

Environmental conditions

| | |
|--------------------------------|--------|
| Maximum operating temperature: | 40 °C |
| Minimum ambient temperature: | -10 °C |

Services (optional)

| | |
|--------------------|---------|
| DAkkS Certificate: | 963-130 |
| Verification: | 965-230 |

Category

| | |
|----------------|-----------------|
| Brand: | KERN |
| Category: | Platforms |
| Product Group: | Weighing bridge |

Packaging & shipping

| | |
|-------------------------------|----------------------|
| Delivery: | 48 h |
| Dimensions packaging (WxDxH): | 1550 x 1300 x 260 mm |
| Gross weight: | 190 kg |
| Net weight: | 147 kg |
| Shipping method: | Freight forwarder |

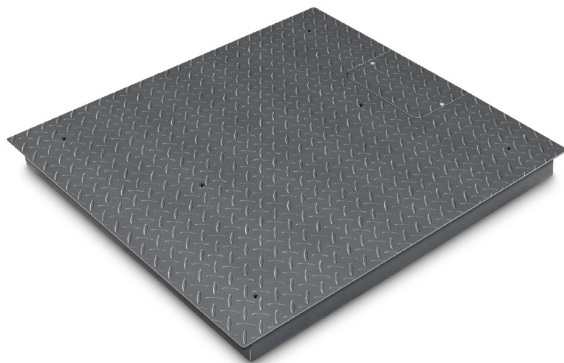
Construction

| | |
|---------------------------------------|---------------------|
| Cable length: | 5 m |
| Dimensions of weighing plate (WxDxH): | 1500 x 1250 x 90 mm |

KERN KFP 1500V20SM

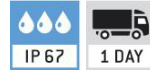
Weighing bridge made of non-slip steel chequer plate, lacquered, welded with IP67

KERN®



Piktogramme

STANDARD



FACTORY



Measuring system

| | |
|--------------------------|---------|
| Load cell connection: | 6-wire |
| Readability [d]: | 500 g |
| Weighing capacity [Max]: | 1,500 t |

Technical data about verification

| | |
|--------------------------------|-------|
| Minimum load [Min]: | 10 kg |
| Verification by KERN possible: | yes |
| Verification value [e]: | 500 g |

Services (optional)

| | |
|--------------------|---------|
| DAkkS Certificate: | 963-130 |
| Verification: | 965-230 |

Category

| | |
|----------------|-----------------|
| Brand: | KERN |
| Category: | Platforms |
| Product Group: | Weighing bridge |

Packaging & shipping

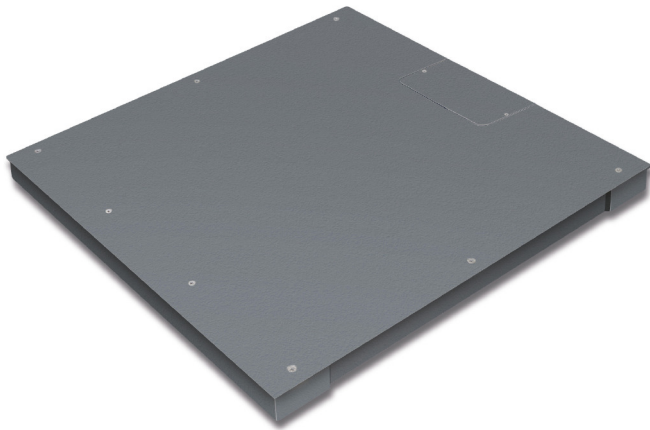
| | |
|-------------------------------|----------------------|
| Delivery: | 48 h |
| Dimensions packaging (WxDxH): | 1010 x 1010 x 545 mm |
| Gross weight: | 110 kg |
| Net weight: | 84 kg |
| Shipping method: | Freight forwarder |

Construction

| | |
|---------------------------------------|---------------------|
| Cable length: | 5 m |
| Dimensions of weighing plate (WxDxH): | 1000 x 1000 x 80 mm |
| Material weighing plate: | stainless steel |
| Revolving screw feet: | yes |
| Weighing surface (WxD): | 1000 x 1000 mm |

KERN KFP 1500V20SNM

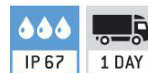
Weighing bridge, screwed, lacquered with IP67



| | |
|--------------------------|-----------------|
| Material weighing plate: | Steel lacquered |
| Revolving screw feet: | yes |
| Weighing surface (WxD): | 1000 x 1000 mm |

Piktogramme

STANDARD



FACTORY



Measuring system

| | |
|--------------------------|---------|
| Load cell connection: | 6-wire |
| Readability [d]: | 500 g |
| Weighing capacity [Max]: | 1,500 t |

Technical data about verification

| | |
|----------------------------------|---------|
| Minimum load [Min]: | 10 kg |
| Periodic Verification for Italy: | 969-112 |
| Verification by KERN possible: | yes |
| Verification class: | III |
| Verification value [e]: | 500 g |

Environmental conditions

| | |
|--------------------------------|--------|
| Maximum operating temperature: | 40 °C |
| Minimum ambient temperature: | -10 °C |

Services (optional)

| | |
|--------------------|---------|
| DAkkS Certificate: | 963-130 |
| Verification: | 965-230 |

Category

| | |
|----------------|-----------------|
| Brand: | KERN |
| Category: | Platforms |
| Product Group: | Weighing bridge |

Packaging & shipping

| | |
|-------------------------------|----------------------|
| Delivery: | 48 h |
| Dimensions packaging (WxDxH): | 1050 x 1050 x 260 mm |
| Gross weight: | 123 kg |
| Net weight: | 97 kg |
| Shipping method: | Freight forwarder |

Construction

| | |
|---------------------------------------|---------------------|
| Cable length: | 5 m |
| Dimensions of weighing plate (WxDxH): | 1000 x 1000 x 80 mm |

KERN KFP 1500V40M

Stainless steel platform with IP68 protection



| | |
|--------------------------|-----------------|
| Material weighing plate: | stainless steel |
| Revolving screw feet: | yes |
| Weighing surface (WxD): | 1500 x 1250 mm |

Piktogramme

STANDARD



FACTORY



Measuring system

| | |
|--------------------------|---------|
| Load cell connection: | 6-wire |
| Readability [d]: | 500 g |
| Weighing capacity [Max]: | 1,500 t |

Technical data about verification

| | |
|--------------------------------|-------|
| Minimum load [Min]: | 10 kg |
| Verification by KERN possible: | yes |
| Verification value [e]: | 500 g |

Services (optional)

| | |
|--------------------|---------|
| DAkkS Certificate: | 963-130 |
| Verification: | 965-230 |

Category

| | |
|----------------|-----------------|
| Brand: | KERN |
| Category: | Platforms |
| Product Group: | Weighing bridge |

Packaging & shipping

| | |
|-------------------------------|----------------------|
| Delivery: | 48 h |
| Dimensions packaging (WxDxH): | 1020 x 1020 x 320 mm |
| Gross weight: | 185 kg |
| Net weight: | 144 kg |
| Shipping method: | Freight forwarder |

Construction

| | |
|---------------------------------------|---------------------|
| Cable length: | 5 m |
| Dimensions of weighing plate (WxDxH): | 1500 x 1250 x 95 mm |

KERN KFP 150V20LM

Platform with stainless steel weighing plate and IP65

KERN®



Piktogramme

STANDARD



FACTORY



Measuring system

| | |
|--------------------------|----------------|
| Load cell connection: | 6-wire |
| Readability [d]: | 5 g |
| Weighing capacity [Max]: | 60 kg 150 kg |

Technical data about verification

| | |
|--------------------------------|----------------|
| Minimum load [Min]: | 400 g 1000 g |
| Verification by KERN possible: | yes |
| Verification value [e]: | 20 g 50 g |

Services (optional)

| | |
|--------------------|---------|
| DAkkS Certificate: | 963-129 |
| Verification: | 965-229 |

Category

| | |
|----------------|-----------|
| Brand: | KERN |
| Category: | Platforms |
| Product Group: | Platform |

Packaging & shipping

| | |
|-------------------------------|---------------------|
| Delivery: | 24 h |
| Dimensions packaging (WxDxH): | 670 x 1040 x 240 mm |
| Gross weight: | 23,400 kg |
| Net weight: | 18,800 kg |
| Shipping method: | Parcel service |

Construction

| | |
|---------------------------------------|--------------------|
| Cable length: | 2,500 m |
| Dimensions of weighing plate (WxDxH): | 650 x 500 x 135 mm |
| Material weighing plate: | stainless steel |
| Revolving screw feet: | yes |
| Weighing surface (WxD): | 650 x 500 mm |

KERN KFP 150V20M

Platform with stainless steel weighing plate and IP65

KERN®



Piktogramme

STANDARD



FACTORY



Measuring system

| | |
|--------------------------|----------------|
| Load cell connection: | 6-wire |
| Readability [d]: | 5 g |
| Weighing capacity [Max]: | 60 kg 150 kg |

Technical data about verification

| | |
|--------------------------------|----------------|
| Minimum load [Min]: | 400 g 1000 g |
| Verification by KERN possible: | yes |
| Verification value [e]: | 20 g 50 g |

Services (optional)

| | |
|--------------------|---------|
| DAkkS Certificate: | 963-129 |
| Verification: | 965-229 |

Category

| | |
|----------------|-----------|
| Brand: | KERN |
| Category: | Platforms |
| Product Group: | Platform |

Packaging & shipping

| | |
|-------------------------------|--------------------|
| Delivery: | 24 h |
| Dimensions packaging (WxDxH): | 555 x 930 x 220 mm |
| Gross weight: | 16,400 kg |
| Net weight: | 9,800 kg |
| Shipping method: | Parcel service |

Construction

| | |
|---------------------------------------|--------------------|
| Cable length: | 2,500 m |
| Dimensions of weighing plate (WxDxH): | 500 x 400 x 130 mm |
| Material weighing plate: | stainless steel |
| Revolving screw feet: | yes |
| Weighing surface (WxD): | 500 x 400 mm |

KERN KFP 150V30LM

Stainless steel platform

KERN®



Piktogramme

STANDARD



FACTORY



Measuring system

| | |
|--------------------------|--------|
| Load cell connection: | 4-wire |
| Readability [d]: | 5 g |
| Weighing capacity [Max]: | 150 kg |

Technical data about verification

| | |
|--------------------------------|------|
| Minimum load [Min]: | 1 kg |
| Verification by KERN possible: | yes |
| Verification value [e]: | 50 g |

Services (optional)

| | |
|--------------------|---------|
| DAkkS Certificate: | 963-129 |
| Verification: | 965-229 |

Category

| | |
|----------------|-----------|
| Brand: | KERN |
| Category: | Platforms |
| Product Group: | Platform |

Packaging & shipping

| | |
|-------------------------------|---------------------|
| Delivery: | 24 h |
| Dimensions packaging (WxDxH): | 1050 x 675 x 250 mm |
| Gross weight: | 25 kg |
| Net weight: | 22 kg |
| Shipping method: | Parcel service |

Construction

| | |
|---------------------------------------|--------------------|
| Cable length: | 2,500 m |
| Dimensions of weighing plate (WxDxH): | 650 x 500 x 135 mm |
| Material weighing plate: | stainless steel |
| Revolving screw feet: | yes |
| Weighing surface (WxD): | 650 x 500 mm |

KERN KFP 150V30M

Stainless steel platform

KERN®



Piktogramme

STANDARD



FACTORY



Measuring system

| | |
|--------------------------|--------|
| Load cell connection: | 6-wire |
| Readability [d]: | 5 g |
| Weighing capacity [Max]: | 150 kg |

Technical data about verification

| | |
|--------------------------------|------|
| Minimum load [Min]: | 1 kg |
| Verification by KERN possible: | yes |
| Verification value [e]: | 50 g |

Services (optional)

| | |
|--------------------|---------|
| DAkkS Certificate: | 963-129 |
| Verification: | 965-229 |

Category

| | |
|----------------|-----------|
| Brand: | KERN |
| Category: | Platforms |
| Product Group: | Platform |

Packaging & shipping

| | |
|-------------------------------|--------------------|
| Delivery: | 24 h |
| Dimensions packaging (WxDxH): | 930 x 555 x 220 mm |
| Gross weight: | 13,300 kg |
| Net weight: | 9,800 kg |
| Shipping method: | Parcel service |

Construction

| | |
|---------------------------------------|--------------------|
| Cable length: | 2,500 m |
| Dimensions of weighing plate (WxDxH): | 500 x 400 x 137 mm |
| Material weighing plate: | stainless steel |
| Revolving screw feet: | yes |
| Weighing surface (WxD): | 500 x 400 mm |

KERN KFP 150V30SM

Stainless steel platform

KERN®



Piktogramme

STANDARD



FACTORY



Measuring system

| | |
|--------------------------|--------|
| Load cell connection: | 6-wire |
| Readability [d]: | 5 g |
| Weighing capacity [Max]: | 150 kg |

Technical data about verification

| | |
|--------------------------------|------|
| Minimum load [Min]: | 1 kg |
| Verification by KERN possible: | yes |
| Verification value [e]: | 50 g |

Services (optional)

| | |
|--------------------|---------|
| DAkkS Certificate: | 963-129 |
| Verification: | 965-229 |

Category

| | |
|----------------|-----------|
| Brand: | KERN |
| Category: | Platforms |
| Product Group: | Platform |

Packaging & shipping

| | |
|-------------------------------|--------------------|
| Delivery: | 24 h |
| Dimensions packaging (WxDxH): | 800 x 470 x 230 mm |
| Gross weight: | 11 kg |
| Net weight: | 9,700 kg |
| Shipping method: | Parcel service |

Construction

| | |
|---------------------------------------|--------------------|
| Cable length: | 2,500 m |
| Dimensions of weighing plate (WxDxH): | 400 x 300 x 128 mm |
| Material weighing plate: | stainless steel |
| Revolving screw feet: | yes |
| Weighing surface (WxD): | 400 x 300 mm |

KERN KFP 15V20LM

Platform with stainless steel weighing plate and IP65

KERN®



Piktogramme

STANDARD



FACTORY



Measuring system

| | |
|--------------------------|--------------|
| Load cell connection: | 6-wire |
| Readability [d]: | 500 mg |
| Weighing capacity [Max]: | 6 kg 15 kg |

Technical data about verification

| | |
|--------------------------------|--------------|
| Minimum load [Min]: | 40 g 100 g |
| Verification by KERN possible: | yes |
| Verification value [e]: | 2 g 5 g |

Services (optional)

| | |
|--------------------|---------|
| DAkkS Certificate: | 963-128 |
| Verification: | 965-228 |

Category

| | |
|----------------|-----------|
| Brand: | KERN |
| Category: | Platforms |
| Product Group: | Platform |

Packaging & shipping

| | |
|-------------------------------|--------------------|
| Delivery: | 24 h |
| Dimensions packaging (WxDxH): | 795 x 460 x 220 mm |
| Gross weight: | 10,600 kg |
| Net weight: | 6,300 kg |
| Shipping method: | Parcel service |

Construction

| | |
|---------------------------------------|--------------------|
| Cable length: | 2,500 m |
| Dimensions of weighing plate (WxDxH): | 400 x 300 x 125 mm |
| Material weighing plate: | stainless steel |
| Revolving screw feet: | yes |
| Weighing surface (WxD): | 400 x 300 mm |

KERN KFP 15V20M

Platform with stainless steel weighing plate and IP65

KERN®



Piktogramme

STANDARD



FACTORY



Measuring system

| | |
|--------------------------|--------------|
| Load cell connection: | 4-wire |
| Readability [d]: | 500 mg |
| Weighing capacity [Max]: | 6 kg 15 kg |

Technical data about verification

| | |
|--------------------------------|--------------|
| Minimum load [Min]: | 40 g 100 g |
| Verification by KERN possible: | yes |
| Verification value [e]: | 2 g 5 g |

Services (optional)

| | |
|--------------------|---------|
| DAkkS Certificate: | 963-128 |
| Verification: | 965-228 |

Category

| | |
|----------------|-----------|
| Brand: | KERN |
| Category: | Platforms |
| Product Group: | Platform |

Packaging & shipping

| | |
|-------------------------------|--------------------|
| Delivery: | 24 h |
| Dimensions packaging (WxDxH): | 695 x 410 x 225 mm |
| Gross weight: | 7 kg |
| Net weight: | 4 kg |
| Shipping method: | Parcel service |

Construction

| | |
|---------------------------------------|--------------------|
| Cable length: | 2,500 m |
| Dimensions of weighing plate (WxDxH): | 300 x 240 x 110 mm |
| Material weighing plate: | stainless steel |
| Revolving screw feet: | yes |
| Weighing surface (WxD): | 300 x 240 mm |

KERN KFP 15V30M

Stainless steel platform

KERN®



Piktogramme

STANDARD



FACTORY



Measuring system

| | |
|--------------------------|--------|
| Load cell connection: | 6-wire |
| Readability [d]: | 500 mg |
| Weighing capacity [Max]: | 15 kg |

Technical data about verification

| | |
|--------------------------------|-------|
| Minimum load [Min]: | 100 g |
| Verification by KERN possible: | yes |
| Verification value [e]: | 5 g |

Services (optional)

| | |
|--------------------|---------|
| DAkkS Certificate: | 963-128 |
| Verification: | 965-228 |

Category

| | |
|----------------|-----------|
| Brand: | KERN |
| Category: | Platforms |
| Product Group: | Platform |

Packaging & shipping

| | |
|-------------------------------|--------------------|
| Delivery: | 24 h |
| Dimensions packaging (WxDxH): | 700 x 415 x 240 mm |
| Gross weight: | 8 kg |
| Net weight: | 5 kg |
| Shipping method: | Parcel service |

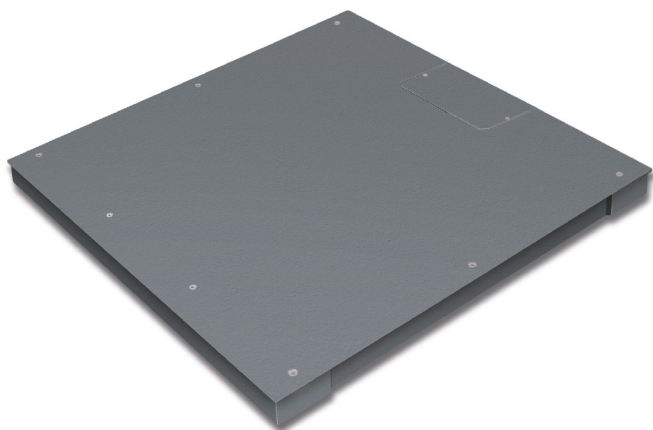
Construction

| | |
|---------------------------------------|--------------------|
| Cable length: | 2,500 m |
| Dimensions of weighing plate (WxDxH): | 300 x 240 x 100 mm |
| Material weighing plate: | stainless steel |
| Revolving screw feet: | yes |
| Weighing surface (WxD): | 300 x 240 mm |

KERN KFP 3000V20LNM

Weighing bridge, screwed, lacquered with IP67

KERN®



| | |
|--------------------------|-----------------|
| Material weighing plate: | Steel lacquered |
| Revolving screw feet: | yes |
| Weighing surface (WxD): | 1500 x 1500 mm |

Piktogramme

STANDARD



FACTORY



Measuring system

| | |
|--------------------------|--------|
| Load cell connection: | 6-wire |
| Readability [d]: | 1 kg |
| Weighing capacity [Max]: | 3 t |

Technical data about verification

| | |
|----------------------------------|---------|
| Minimum load [Min]: | 20 kg |
| Periodic Verification for Italy: | 969-112 |
| Verification by KERN possible: | yes |
| Verification class: | III |
| Verification value [e]: | 1 kg |

Environmental conditions

| | |
|--------------------------------|-------|
| Maximum operating temperature: | 40 °C |
|--------------------------------|-------|

Services (optional)

| | |
|--------------------|---------|
| DAkkS Certificate: | 963-132 |
| Verification: | 965-232 |

Category

| | |
|----------------|-----------------|
| Brand: | KERN |
| Category: | Platforms |
| Product Group: | Weighing bridge |

Packaging & shipping

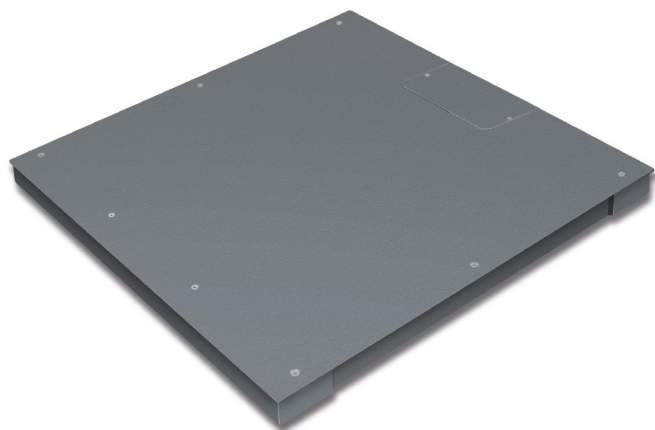
| | |
|-------------------------------|----------------------|
| Delivery: | 48 h |
| Dimensions packaging (WxDxH): | 1610 x 1570 x 360 mm |
| Gross weight: | 234 kg |
| Net weight: | 171 kg |
| Shipping method: | Freight forwarder |

Construction

| | |
|---------------------------------------|---------------------|
| Cable length: | 5 m |
| Dimensions of weighing plate (WxDxH): | 1500 x 1500 x 80 mm |

KERN KFP 3000V20NM

Weighing bridge, screwed, lacquered with IP67



Material weighing plate: Steel lacquered

Revolving screw feet: yes

Weighing surface (WxD): 1500 x 1250 mm

Piktogramme

STANDARD



FACTORY



Measuring system

Load cell connection: 6-wire

Readability [d]: 1 kg

Weighing capacity [Max]: 3 t

Technical data about verification

Minimum load [Min]: 20 kg

Periodic Verification for Italy: 969-112

Verification by KERN possible: yes

Verification class: III

Verification value [e]: 1 kg

Environmental conditions

Maximum operating temperature: 40 °C

Minimum ambient temperature: -10 °C

Services (optional)

DAkkS Certificate: 963-132

Verification: 965-232

Category

Brand: KERN

Category: Platforms

Product Group: Weighing bridge

Packaging & shipping

Delivery: 48 h

Dimensions packaging (WxDxH): 1550 x 1300 x 260 mm

Gross weight: 188 kg

Net weight: 135 kg

Shipping method: Freight forwarder

Construction

Cable length: 5 m

Dimensions of weighing plate 1500 x 1250 x 90 mm

(WxDxH):

KERN KFP 3000V40M

Stainless steel platform with IP68 protection



| | |
|--------------------------|-----------------|
| Material weighing plate: | stainless steel |
| Revolving screw feet: | yes |
| Weighing surface (WxD): | 1500 x 1250 mm |

Piktogramme

STANDARD



FACTORY



Measuring system

| | |
|--------------------------|--------|
| Load cell connection: | 6-wire |
| Readability [d]: | 1 kg |
| Weighing capacity [Max]: | 3 t |

Technical data about verification

| | |
|--------------------------------|-------|
| Minimum load [Min]: | 20 kg |
| Verification by KERN possible: | yes |
| Verification value [e]: | 1 kg |

Services (optional)

| | |
|--------------------|---------|
| DAkkS Certificate: | 963-132 |
| Verification: | 965-232 |

Category

| | |
|----------------|-----------------|
| Brand: | KERN |
| Category: | Platforms |
| Product Group: | Weighing bridge |

Packaging & shipping

| | |
|-------------------------------|----------------------|
| Delivery: | 48 h |
| Dimensions packaging (WxDxH): | 1530 x 1260 x 330 mm |
| Gross weight: | 189 kg |
| Net weight: | 134 kg |
| Shipping method: | Freight forwarder |

Construction

| | |
|---------------------------------------|---------------------|
| Cable length: | 5 m |
| Dimensions of weighing plate (WxDxH): | 1500 x 1250 x 80 mm |

KERN KFP300V20M

Platform with stainless steel weighing plate and IP65



Piktogramme

STANDARD



FACTORY



Measuring system

| | |
|--------------------------|-----------------|
| Load cell connection: | 6-wire |
| Readability [d]: | 10 g |
| Weighing capacity [Max]: | 150 kg 300 kg |

Technical data about verification

| | |
|--------------------------------|--------------|
| Minimum load [Min]: | 1 kg 2 kg |
| Verification by KERN possible: | yes |
| Verification value [e]: | 50 g 100 g |

Services (optional)

| | |
|--------------------|---------|
| DAkkS Certificate: | 963-129 |
| Verification: | 965-229 |

Category

| | |
|----------------|-----------|
| Brand: | KERN |
| Category: | Platforms |
| Product Group: | Platform |

Packaging & shipping

| | |
|-------------------------------|---------------------|
| Delivery: | 24 h |
| Dimensions packaging (WxDxH): | 670 x 1045 x 245 mm |
| Gross weight: | 25 kg |
| Net weight: | 20,500 kg |
| Shipping method: | Parcel service |

Construction

| | |
|---------------------------------------|--------------------|
| Cable length: | 2,500 m |
| Dimensions of weighing plate (WxDxH): | 650 x 500 x 135 mm |
| Material weighing plate: | stainless steel |
| Revolving screw feet: | yes |
| Weighing surface (WxD): | 650 x 500 mm |

KERN KFP 300V30M

Stainless steel platform

KERN®



Piktogramme

STANDARD



FACTORY



Measuring system

| | |
|--------------------------|--------|
| Load cell connection: | 4-wire |
| Readability [d]: | 10 g |
| Weighing capacity [Max]: | 300 kg |

Technical data about verification

| | |
|--------------------------------|-------|
| Minimum load [Min]: | 2 kg |
| Verification by KERN possible: | yes |
| Verification value [e]: | 100 g |

Services (optional)

| | |
|--------------------|---------|
| DAkkS Certificate: | 963-129 |
| Verification: | 965-229 |

Category

| | |
|----------------|-----------|
| Brand: | KERN |
| Category: | Platforms |
| Product Group: | Platform |

Packaging & shipping

| | |
|-------------------------------|--------------------|
| Delivery: | 24 h |
| Dimensions packaging (WxDxH): | 740 x 580 x 230 mm |
| Gross weight: | 25 kg |
| Net weight: | 22 kg |
| Shipping method: | Parcel service |

Construction

| | |
|---------------------------------------|--------------------|
| Cable length: | 2,500 m |
| Dimensions of weighing plate (WxDxH): | 650 x 500 x 135 mm |
| Material weighing plate: | stainless steel |
| Revolving screw feet: | yes |
| Weighing surface (WxD): | 650 x 500 mm |

KERN KFP30V20M

Platform with stainless steel weighing plate and IP65



Piktogramme

STANDARD



FACTORY



Measuring system

| | |
|--------------------------|---------------|
| Load cell connection: | 4-wire |
| Readability [d]: | 1 g |
| Weighing capacity [Max]: | 15 kg 30 kg |

Technical data about verification

| | |
|--------------------------------|---------------|
| Minimum load [Min]: | 100 g 200 g |
| Verification by KERN possible: | yes |
| Verification value [e]: | 5 g 10 g |

Services (optional)

| | |
|--------------------|---------|
| DAkkS Certificate: | 963-128 |
| Verification: | 965-228 |

Category

| | |
|----------------|-----------|
| Brand: | KERN |
| Category: | Platforms |
| Product Group: | Platform |

Packaging & shipping

| | |
|-------------------------------|--------------------|
| Delivery: | 24 h |
| Dimensions packaging (WxDxH): | 795 x 460 x 220 mm |
| Gross weight: | 7,100 kg |
| Net weight: | 6,300 kg |
| Shipping method: | Parcel service |

Construction

| | |
|---------------------------------------|--------------------|
| Cable length: | 2,500 m |
| Dimensions of weighing plate (WxDxH): | 400 x 300 x 125 mm |
| Material weighing plate: | stainless steel |
| Revolving screw feet: | yes |
| Weighing surface (WxD): | 400 x 300 mm |

KERN KFP30V20SM

Platform with stainless steel weighing plate and IP65



| | |
|--------------------------|-----------------|
| Material weighing plate: | stainless steel |
| Revolving screw feet: | yes |
| Weighing surface (WxD): | 300 x 240 mm |

Piktogramme

STANDARD



FACTORY



Measuring system

| | |
|--------------------------|---------------|
| Load cell connection: | 4-wire |
| Readability [d]: | 1 g |
| Weighing capacity [Max]: | 15 kg 30 kg |

Technical data about verification

| | |
|--------------------------------|---------------|
| Minimum load [Min]: | 100 g 200 g |
| Verification by KERN possible: | yes |
| Verification value [e]: | 5 g 10 g |

Environmental conditions

| | |
|--------------------------------|-------|
| Maximum operating temperature: | 40 °C |
|--------------------------------|-------|

Services (optional)

| | |
|--------------------|---------|
| DAkkS Certificate: | 963-128 |
| Verification: | 965-228 |

Category

| | |
|----------------|-----------|
| Brand: | KERN |
| Category: | Platforms |
| Product Group: | Platform |

Packaging & shipping

| | |
|-------------------------------|--------------------|
| Delivery: | 24 h |
| Dimensions packaging (WxDxH): | 693 x 414 x 225 mm |
| Gross weight: | 5,420 kg |
| Net weight: | 3,800 kg |
| Shipping method: | Parcel service |

Construction

| | |
|---------------------------------------|--------------------|
| Cable length: | 2,500 m |
| Dimensions of weighing plate (WxDxH): | 300 x 240 x 105 mm |

KERN KFP30V30M

Stainless steel platform

KERN®



Piktogramme

STANDARD



FACTORY



Measuring system

| | |
|--------------------------|--------|
| Load cell connection: | 6-wire |
| Readability [d]: | 1 g |
| Weighing capacity [Max]: | 30 kg |

Technical data about verification

| | |
|--------------------------------|-------|
| Minimum load [Min]: | 200 g |
| Verification by KERN possible: | yes |
| Verification value [e]: | 10 g |

Services (optional)

| | |
|--------------------|---------|
| DAkkS Certificate: | 963-128 |
| Verification: | 965-228 |

Category

| | |
|----------------|-----------|
| Brand: | KERN |
| Category: | Platforms |
| Product Group: | Platform |

Packaging & shipping

| | |
|-------------------------------|--------------------|
| Delivery: | 24 h |
| Dimensions packaging (WxDxH): | 800 x 470 x 240 mm |
| Gross weight: | 10 kg |
| Net weight: | 7,200 kg |
| Shipping method: | Parcel service |

Construction

| | |
|---------------------------------------|--------------------|
| Cable length: | 2,500 m |
| Dimensions of weighing plate (WxDxH): | 400 x 300 x 128 mm |
| Material weighing plate: | stainless steel |
| Revolving screw feet: | yes |
| Weighing surface (WxD): | 400 x 300 mm |

KERN KFP 30V30SM

Stainless steel platform

KERN®



Piktogramme

STANDARD



FACTORY



Measuring system

| | |
|--------------------------|--------|
| Load cell connection: | 6-wire |
| Readability [d]: | 10 g |
| Weighing capacity [Max]: | 30 kg |

Technical data about verification

| | |
|--------------------------------|-------|
| Minimum load [Min]: | 200 g |
| Verification by KERN possible: | yes |
| Verification value [e]: | 10 g |

Environmental conditions

| | |
|--------------------------------|-------|
| Maximum operating temperature: | 40 °C |
|--------------------------------|-------|

Services (optional)

| | |
|--------------------|---------|
| DAkkS Certificate: | 963-128 |
| Verification: | 965-228 |

Category

| | |
|----------------|-----------|
| Brand: | KERN |
| Category: | Platforms |
| Product Group: | Platform |

Packaging & shipping

| | |
|-------------------------------|--------------------|
| Delivery: | 24 h |
| Dimensions packaging (WxDxH): | 700 x 410 x 220 mm |
| Gross weight: | 6 kg |
| Net weight: | 5 kg |
| Shipping method: | Parcel service |

Construction

| | |
|---------------------------------------|--------------------|
| Cable length: | 2,500 m |
| Dimensions of weighing plate (WxDxH): | 300 x 240 x 100 mm |
| Material weighing plate: | stainless steel |
| Revolving screw feet: | yes |
| Weighing surface (WxD): | 300 x 240 mm |

KERN KFP3V20M

Platform with stainless steel weighing plate and IP65

KERN®



Piktogramme

STANDARD



FACTORY



Measuring system

| | |
|--------------------------|--------|
| Load cell connection: | 4-wire |
| Readability [d]: | 100 mg |
| Weighing capacity [Max]: | 3 kg |

Technical data about verification

| | |
|-------------------------|------|
| Minimum load [Min]: | 20 g |
| Verification value [e]: | 1 g |

Services (optional)

| | |
|--------------------|---------|
| DAkkS Certificate: | 963-127 |
|--------------------|---------|

Category

| | |
|----------------|-----------|
| Brand: | KERN |
| Category: | Platforms |
| Product Group: | Platform |

Packaging & shipping

| | |
|-------------------------------|--------------------|
| Delivery: | 24 h |
| Dimensions packaging (WxDxH): | 315 x 310 x 165 mm |
| Gross weight: | 5 kg |
| Net weight: | 3,300 kg |
| Shipping method: | Parcel service |

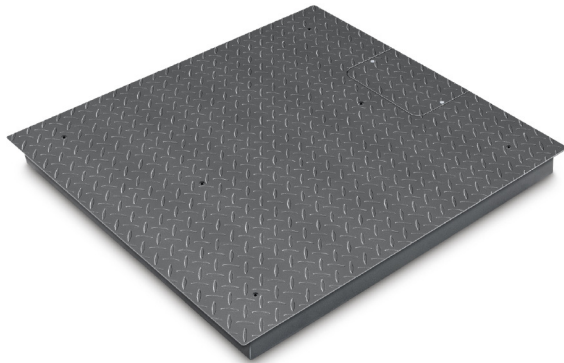
Construction

| | |
|---------------------------------------|--------------------|
| Cable length: | 2,500 m |
| Dimensions of weighing plate (WxDxH): | 230 x 230 x 105 mm |
| Material weighing plate: | stainless steel |
| Revolving screw feet: | yes |
| Weighing surface (WxD): | 230 x 230 mm |

KERN KFP6000V20M

Weighing bridge made of non-slip steel chequer plate, lacquered, welded with IP67

KERN®



Piktogramme

STANDARD



FACTORY



Measuring system

| | |
|--------------------------|--------|
| Load cell connection: | 6-wire |
| Readability [d]: | 2 kg |
| Weighing capacity [Max]: | 6 t |

Technical data about verification

| | |
|--------------------------------|-------|
| Minimum load [Min]: | 40 kg |
| Verification by KERN possible: | yes |
| Verification value [e]: | 2 kg |

Services (optional)

| | |
|--------------------|---------|
| DAkkS Certificate: | 963-132 |
| Verification: | 965-232 |

Category

| | |
|----------------|-----------------|
| Brand: | KERN |
| Category: | Platforms |
| Product Group: | Weighing bridge |

Packaging & shipping

| | |
|-------------------------------|----------------------|
| Delivery: | 48 h |
| Dimensions packaging (WxDxH): | 1550 x 1300 x 350 mm |
| Gross weight: | 274 kg |
| Net weight: | 208 kg |
| Shipping method: | Freight forwarder |

Construction

| | |
|---------------------------------------|----------------------|
| Cable length: | 5 m |
| Dimensions of weighing plate (WxDxH): | 1500 x 1500 x 121 mm |
| Material weighing plate: | stainless steel |
| Revolving screw feet: | yes |
| Weighing surface (WxD): | 1500 x 1500 mm |

KERN KFP600V20AM

Platform with stainless steel weighing plate and IP65



Piktogramme

STANDARD



FACTORY



Measuring system

| | |
|--------------------------|--------|
| Load cell connection: | 6-wire |
| Readability [d]: | 20 g |
| Weighing capacity [Max]: | 600 kg |

Technical data about verification

| | |
|--------------------------------|-------|
| Minimum load [Min]: | 4 kg |
| Verification by KERN possible: | yes |
| Verification value [e]: | 200 g |

Services (optional)

| | |
|--------------------|---------|
| DAkkS Certificate: | 963-130 |
| Verification: | 965-230 |

Category

| | |
|----------------|-----------|
| Brand: | KERN |
| Category: | Platforms |
| Product Group: | Platform |

Packaging & shipping

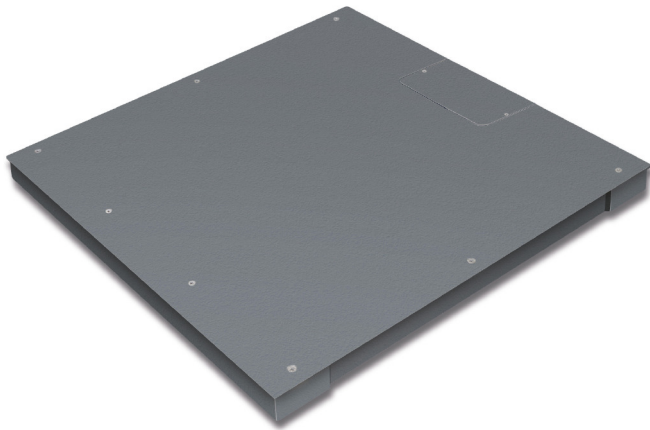
| | |
|-------------------------------|---------------------|
| Delivery: | 48 h |
| Dimensions packaging (WxDxH): | 850 x 1250 x 240 mm |
| Gross weight: | 55 kg |
| Net weight: | 41,800 kg |
| Shipping method: | Freight forwarder |

Construction

| | |
|---------------------------------------|--------------------|
| Cable length: | 2,500 m |
| Dimensions of weighing plate (WxDxH): | 800 x 600 x 190 mm |
| Material weighing plate: | stainless steel |
| Revolving screw feet: | yes |
| Weighing surface (WxD): | 800 x 600 mm |

KERN KFP 600V20NM

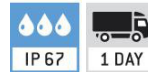
Weighing bridge, screwed, lacquered with IP67



| | |
|--------------------------|-----------------|
| Material weighing plate: | Steel lacquered |
| Revolving screw feet: | yes |
| Weighing surface (WxD): | 1500 x 1250 mm |

Piktogramme

STANDARD



FACTORY



Measuring system

| | |
|--------------------------|--------|
| Load cell connection: | 4-wire |
| Readability [d]: | 200 g |
| Weighing capacity [Max]: | 600 kg |

Technical data about verification

| | |
|----------------------------------|---------|
| Minimum load [Min]: | 4 kg |
| Periodic Verification for Italy: | 969-112 |
| Verification by KERN possible: | yes |
| Verification class: | III |
| Verification value [e]: | 200 g |

Environmental conditions

| | |
|--------------------------------|--------|
| Maximum operating temperature: | 40 °C |
| Minimum ambient temperature: | -10 °C |

Services (optional)

| | |
|--------------------|---------|
| DAkkS Certificate: | 963-130 |
| Verification: | 965-230 |

Category

| | |
|----------------|-----------------|
| Brand: | KERN |
| Category: | Platforms |
| Product Group: | Weighing bridge |

Packaging & shipping

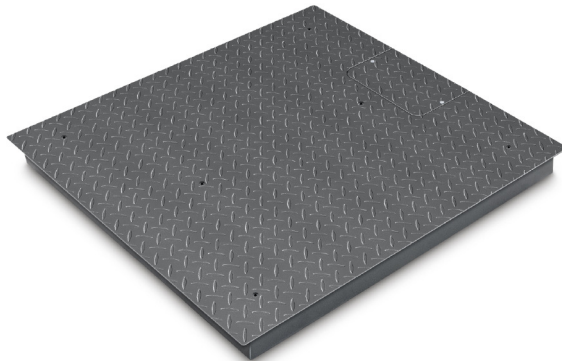
| | |
|-------------------------------|----------------------|
| Delivery: | 48 h |
| Dimensions packaging (WxDxH): | 1550 x 1300 x 260 mm |
| Gross weight: | 189 kg |
| Net weight: | 148 kg |
| Shipping method: | Freight forwarder |

Construction

| | |
|---------------------------------------|---------------------|
| Cable length: | 5 m |
| Dimensions of weighing plate (WxDxH): | 1500 x 1250 x 80 mm |

KERN KFP600V20SM

Weighing bridge made of non-slip steel chequer plate, lacquered, welded with IP67



Piktogramme

STANDARD



FACTORY



Measuring system

| | |
|--------------------------|--------|
| Load cell connection: | 6-wire |
| Readability [d]: | 200 g |
| Weighing capacity [Max]: | 600 kg |

Technical data about verification

| | |
|--------------------------------|-------|
| Minimum load [Min]: | 4 kg |
| Verification by KERN possible: | yes |
| Verification value [e]: | 200 g |

Services (optional)

| | |
|--------------------|---------|
| DAkkS Certificate: | 963-130 |
| Verification: | 965-230 |

Category

| | |
|----------------|-----------------|
| Brand: | KERN |
| Category: | Platforms |
| Product Group: | Weighing bridge |

Packaging & shipping

| | |
|-------------------------------|----------------------|
| Delivery: | 48 h |
| Dimensions packaging (WxDxH): | 1200 x 1200 x 330 mm |
| Gross weight: | 116 kg |
| Net weight: | 84 kg |
| Shipping method: | Freight forwarder |

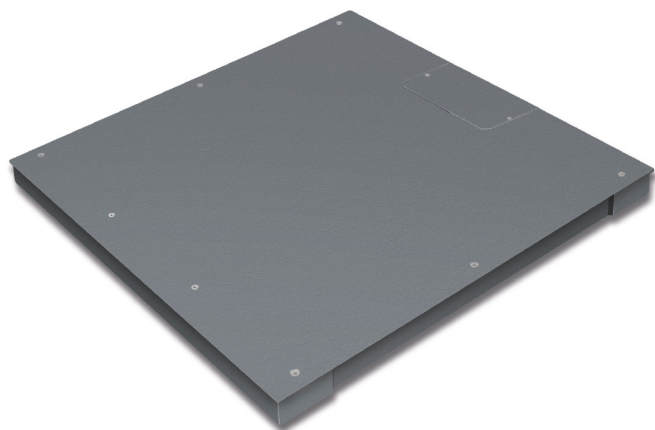
Construction

| | |
|---------------------------------------|---------------------|
| Cable length: | 5 m |
| Dimensions of weighing plate (WxDxH): | 1000 x 1000 x 80 mm |
| Material weighing plate: | Steel lacquered |
| Revolving screw feet: | yes |
| Weighing surface (WxD): | 1000 x 1000 mm |

KERN KFP600V20SNM

Weighing bridge, screwed, lacquered with IP67

KERN®



| | |
|--------------------------|-----------------|
| Material weighing plate: | Steel lacquered |
| Revolving screw feet: | yes |
| Weighing surface (WxD): | 1000 x 1000 mm |

Piktogramme

STANDARD



FACTORY



Measuring system

| | |
|--------------------------|--------|
| Load cell connection: | 4-wire |
| Readability [d]: | 200 g |
| Weighing capacity [Max]: | 600 kg |

Technical data about verification

| | |
|----------------------------------|---------|
| Minimum load [Min]: | 4 kg |
| Periodic Verification for Italy: | 969-112 |
| Verification by KERN possible: | yes |
| Verification class: | III |
| Verification value [e]: | 200 g |

Environmental conditions

| | |
|--------------------------------|--------|
| Maximum operating temperature: | 40 °C |
| Minimum ambient temperature: | -10 °C |

Services (optional)

| | |
|--------------------|---------|
| DAkkS Certificate: | 963-130 |
| Verification: | 965-230 |

Category

| | |
|----------------|-----------------|
| Brand: | KERN |
| Category: | Platforms |
| Product Group: | Weighing bridge |

Packaging & shipping

| | |
|-------------------------------|----------------------|
| Delivery: | 48 h |
| Dimensions packaging (WxDxH): | 1050 x 1050 x 260 mm |
| Gross weight: | 131 kg |
| Net weight: | 94 kg |
| Shipping method: | Freight forwarder |

Construction

| | |
|---------------------------------------|---------------------|
| Cable length: | 5 m |
| Dimensions of weighing plate (WxDxH): | 1000 x 1000 x 80 mm |

KERN KFP60V20LM

Platform with stainless steel weighing plate and IP65

KERN®



Piktogramme

STANDARD



FACTORY



Measuring system

| | |
|--------------------------|---------------|
| Load cell connection: | 4-wire |
| Readability [d]: | 2 g |
| Weighing capacity [Max]: | 30 kg 60 kg |

Technical data about verification

| | |
|--------------------------------|---------------|
| Minimum load [Min]: | 200 g 400 g |
| Verification by KERN possible: | yes |
| Verification value [e]: | 10 g 20 g |

Services (optional)

| | |
|--------------------|---------|
| DAkkS Certificate: | 963-129 |
| Verification: | 965-229 |

Category

| | |
|----------------|-----------|
| Brand: | KERN |
| Category: | Platforms |
| Product Group: | Platform |

Packaging & shipping

| | |
|-------------------------------|--------------------|
| Delivery: | 24 h |
| Dimensions packaging (WxDxH): | 930 x 550 x 210 mm |
| Gross weight: | 15,900 kg |
| Net weight: | 13,300 kg |
| Shipping method: | Parcel service |

Construction

| | |
|---------------------------------------|--------------------|
| Cable length: | 2,500 m |
| Dimensions of weighing plate (WxDxH): | 500 x 400 x 137 mm |
| Material weighing plate: | stainless steel |
| Revolving screw feet: | yes |
| Weighing surface (WxD): | 500 x 400 mm |

KERN KFP60V20M

Platform with stainless steel weighing plate and IP65



Piktogramme

STANDARD



FACTORY



Measuring system

| | |
|--------------------------|---------------|
| Load cell connection: | 4-wire |
| Readability [d]: | 2 g |
| Weighing capacity [Max]: | 30 kg 60 kg |

Technical data about verification

| | |
|--------------------------------|---------------|
| Minimum load [Min]: | 200 g 400 g |
| Verification by KERN possible: | yes |
| Verification value [e]: | 10 g 20 g |

Services (optional)

| | |
|--------------------|---------|
| DAkkS Certificate: | 963-129 |
| Verification: | 965-229 |

Category

| | |
|----------------|-----------|
| Brand: | KERN |
| Category: | Platforms |
| Product Group: | Platform |

Packaging & shipping

| | |
|-------------------------------|--------------------|
| Delivery: | 24 h |
| Dimensions packaging (WxDxH): | 470 x 800 x 240 mm |
| Gross weight: | 12 kg |
| Net weight: | 6,300 kg |
| Shipping method: | Parcel service |

Construction

| | |
|---------------------------------------|--------------------|
| Cable length: | 2,500 m |
| Dimensions of weighing plate (WxDxH): | 400 x 300 x 125 mm |
| Material weighing plate: | stainless steel |
| Revolving screw feet: | yes |
| Weighing surface (WxD): | 400 x 300 mm |

KERN KFP60V30LM

Stainless steel platform

KERN®



Piktogramme

STANDARD



FACTORY



Measuring system

| | |
|--------------------------|--------|
| Load cell connection: | 6-wire |
| Readability [d]: | 2 g |
| Weighing capacity [Max]: | 60 kg |

Technical data about verification

| | |
|--------------------------------|-------|
| Minimum load [Min]: | 400 g |
| Verification by KERN possible: | yes |
| Verification value [e]: | 20 g |

Services (optional)

| | |
|--------------------|---------|
| DAkkS Certificate: | 963-129 |
| Verification: | 965-229 |

Category

| | |
|----------------|-----------|
| Brand: | KERN |
| Category: | Platforms |
| Product Group: | Platform |

Packaging & shipping

| | |
|-------------------------------|--------------------|
| Delivery: | 24 h |
| Dimensions packaging (WxDxH): | 930 x 545 x 230 mm |
| Gross weight: | 13,300 kg |
| Net weight: | 13,300 kg |
| Shipping method: | Parcel service |

Construction

| | |
|---------------------------------------|--------------------|
| Cable length: | 2,500 m |
| Dimensions of weighing plate (WxDxH): | 500 x 400 x 110 mm |
| Material weighing plate: | stainless steel |
| Revolving screw feet: | yes |
| Weighing surface (WxD): | 500 x 400 mm |

KERN KFP60V30M

Stainless steel platform

KERN®



Piktogramme

STANDARD



FACTORY



Measuring system

| | |
|--------------------------|--------|
| Load cell connection: | 6-wire |
| Readability [d]: | 2 g |
| Weighing capacity [Max]: | 60 kg |

Technical data about verification

| | |
|--------------------------------|-------|
| Minimum load [Min]: | 400 g |
| Verification by KERN possible: | yes |
| Verification value [e]: | 20 g |

Services (optional)

| | |
|--------------------|---------|
| DAkkS Certificate: | 963-129 |
| Verification: | 965-229 |

Category

| | |
|----------------|-----------|
| Brand: | KERN |
| Category: | Platforms |
| Product Group: | Platform |

Packaging & shipping

| | |
|-------------------------------|--------------------|
| Delivery: | 24 h |
| Dimensions packaging (WxDxH): | 470 x 790 x 230 mm |
| Gross weight: | 11,160 kg |
| Net weight: | 7,200 kg |
| Shipping method: | Parcel service |

Construction

| | |
|---------------------------------------|--------------------|
| Cable length: | 2,500 m |
| Dimensions of weighing plate (WxDxH): | 400 x 300 x 128 mm |
| Material weighing plate: | stainless steel |
| Revolving screw feet: | yes |
| Weighing surface (WxD): | 400 x 300 mm |

KERN KFP60V30XLM

Stainless steel platform

KERN®



Piktogramme

STANDARD



FACTORY



Measuring system

| | |
|--------------------------|--------|
| Load cell connection: | 6-wire |
| Readability [d]: | 2 g |
| Weighing capacity [Max]: | 60 kg |

Technical data about verification

| | |
|--------------------------------|-------|
| Minimum load [Min]: | 400 g |
| Verification by KERN possible: | yes |
| Verification value [e]: | 20 g |

Services (optional)

| | |
|--------------------|---------|
| DAkkS Certificate: | 963-129 |
| Verification: | 965-229 |

Category

| | |
|----------------|-----------|
| Brand: | KERN |
| Category: | Platforms |
| Product Group: | Platform |

Packaging & shipping

| | |
|-------------------------------|---------------------|
| Delivery: | 24 h |
| Dimensions packaging (WxDxH): | 1050 x 675 x 250 mm |
| Gross weight: | 25 kg |
| Net weight: | 22 kg |
| Shipping method: | Parcel service |

Construction

| | |
|---------------------------------------|--------------------|
| Cable length: | 2,500 m |
| Dimensions of weighing plate (WxDxH): | 650 x 500 x 142 mm |
| Material weighing plate: | stainless steel |
| Revolving screw feet: | yes |
| Weighing surface (WxD): | 650 x 500 mm |

KERN KFP6V20LM

Platform with stainless steel weighing plate and IP65

KERN®



Piktogramme

STANDARD



FACTORY



Measuring system

| | |
|------------------------------------|---------|
| Load cell connection: | 4-wire |
| Readability [d]: | 200 mg |
| Resolution Load cell â Verifiable: | 2x3000e |
| Weighing capacity [Max]: | 6 kg |

Technical data about verification

| | |
|--------------------------------|-------------|
| Minimum load [Min]: | 20 g 40 g |
| Verification by KERN possible: | yes |
| Verification value [e]: | 1 g 2 g |

Services (optional)

| | |
|--------------------|---------|
| DAkkS Certificate: | 963-128 |
| Verification: | 965-228 |

Category

| | |
|----------------|-----------|
| Brand: | KERN |
| Category: | Platforms |
| Product Group: | Platform |

Packaging & shipping

| | |
|-------------------------------|--------------------|
| Delivery: | 24 h |
| Dimensions packaging (WxDxH): | 700 x 405 x 230 mm |
| Gross weight: | 6,700 kg |
| Net weight: | 3,800 kg |
| Shipping method: | Parcel service |

Construction

| | |
|---------------------------------------|--------------------|
| Cable length: | 2,500 m |
| Dimensions of weighing plate (WxDxH): | 300 x 240 x 105 mm |
| Material weighing plate: | stainless steel |
| Revolving screw feet: | yes |
| Weighing surface (WxD): | 300 x 240 mm |

KERN KFP6V20M

Platform with stainless steel weighing plate and IP65

KERN®



Piktogramme

STANDARD



FACTORY



Measuring system

| | |
|--------------------------|--------|
| Load cell connection: | 4-wire |
| Readability [d]: | 200 mg |
| Weighing capacity [Max]: | 6 kg |

Technical data about verification

| | |
|--------------------------------|-------------|
| Minimum load [Min]: | 20 g 40 g |
| Verification by KERN possible: | yes |
| Verification value [e]: | 1 g 2 g |

Services (optional)

| | |
|--------------------|---------|
| DAkkS Certificate: | 963-128 |
| Verification: | 965-228 |

Category

| | |
|----------------|-----------|
| Brand: | KERN |
| Category: | Platforms |
| Product Group: | Platform |

Packaging & shipping

| | |
|-------------------------------|--------------------|
| Delivery: | 24 h |
| Dimensions packaging (WxDxH): | 315 x 310 x 165 mm |
| Gross weight: | 5,900 kg |
| Net weight: | 4,400 kg |
| Shipping method: | Parcel service |

Construction

| | |
|---------------------------------------|--------------------|
| Cable length: | 2,500 m |
| Dimensions of weighing plate (WxDxH): | 230 x 230 x 105 mm |
| Material weighing plate: | stainless steel |
| Revolving screw feet: | yes |
| Weighing surface (WxD): | 230 x 230 mm |